



INSTALLATION GUIDE & SPARE PARTS CATALOGUE

Cabin certified:

ISEKI TH

Model ISEKI:

TH4335FGR- TH4335FSR- TH4435FHR-
TH4295FGR- TH4295FSR- TH4295FHR-
TH4365FHR

Model MASSEY FERGUSON:

MF1532FSR-MF1529FSR-MF1532FHR

MAINTENANCE GUIDE

Dear Customer,

We thank you for choosing an Agrital cab!

Here's a reference guide for the most common maintenance operation you'll be performing to maintain your new cab efficient and in good state.

CLEANING

To clean the interior, we suggest to remove the carpets and clean them separately, in order not to leave them wet. The fixed linings can be cleaned with simple water.

DOOR ADJUSTMENT

After having installed your new cab, you may need to adjust the door locking by adjusting the attachment of the door latch. This operation must be carried on each time the cab is mounted.

To maintain a good efficiency of the locks, we strongly suggest not to operate the tractor with the doors open, since the vibrations could damage the hinges.

HEATING/VENTILATION SYSTEM (water-cooled tractors only)

In order to switch from the heating to the simple ventilation, the operator has to turn off the hydraulic outlet tap inside the cab.

CLEANING AND CHANGING THE AIR FILTERS

We suggest to clean the intake air filter every 150 working hours with compressed air or a vacuum cleaner.

After 1000 working hours, we suggest to completely clean the air system by using compressed air. To access the system remove the roof (the silicone will have to be removed as well). We suggest to put new silicone back when mounting the roof again.

We suggest to change the air filter once a year.

Carbon activated filters have a very limited life span. We suggest to use them only when dealing with special chemical treatments and to use a standard filter for other operations.

Store the activated carbon filter in its package when not in use.

The life span of the filter depends on the working conditions. The mean life span is about 150 working hours.

AIR CONDITIONING SYSTEM

To keep the air conditioning effective, please remember to clean the radiator on the roof and keep the gas on the compressor at level.

To clean the radiator use compressed air. Keep a maximum of 3.5 bar in order not to damage the radiator.

To refill the compressor, do not exceed 0.7 Kg. for big compressors and 0.5 for small compressors and do not put the system under excessive pressure.

For further instructions please refer to the instruction manual of the air conditioning system.

Please do not hesitate to contact us for any question!

AGRITAL S.r.l.
Via Leonardo Da Vinci, 20
24040 Arzago d'Adda
(BERGAMO) - ITALY
TEL : +39-0363-87633
FAX : +39-0363-87355
E-Mail: agrital@agrital.com
WEB site: <http://www.agrital.com>

WARRANTY REGISTRATION

Dear costumer,

The warranty is valid only if you fill the form and sent it back to Agrital within 15 days from the date of purchase. The form may be sent by e-mail or by fax.

Model of cab or tractor: _____

Cab serial number: _____

Date of purchase: _____

Dealer's name: _____

The warranty is valid for 12 months for defective parts, Agrital doesn't recognize the warranty for breakage caused by improper use, normal wear or damage from the user.

For air conditioning system, please fill also the manufacturer's warranty

The customer confirm to have received the owner's manual and the maintenance manual. He has been properly informed by the dealer on the correct use of the cabin. For the use of any personal protective equipment the user must follow the directions of his person in charge for the safety at work.

The dealer confirms that he has installed the cab in according to instruction provided by the manufacturer, in order that the SAE-OECD approval is valid.

Stamp dealer:

Date and place: _____

Name, Surname or
Company's name: _____
(block letters)

Signature: _____

MOUNTING

Follow the following guidelines:

- Remove the front oblò, the rear roll bar, rear view mirror, the door plate, handles present on the splashboard.
- Insert the wire brushes and closing rubbers as shown in the diagram below.
in the case of KIT LUXURY you must do this BEFORE to proceed .

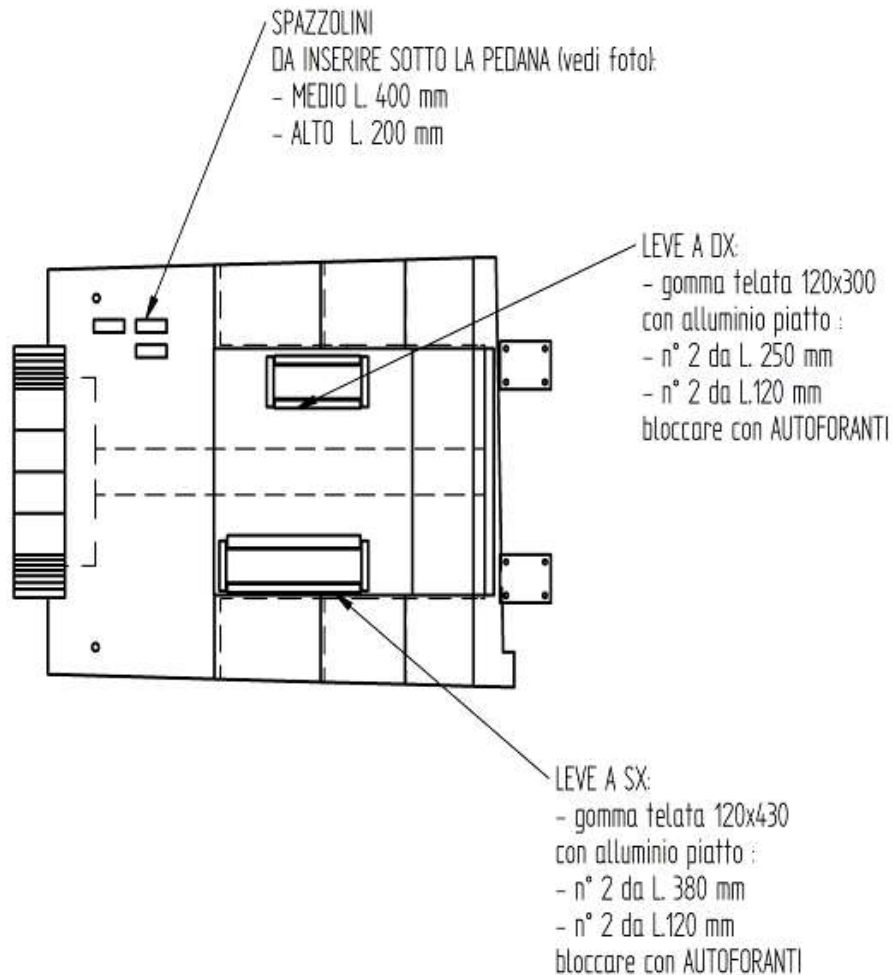


Photo for the closure of the pedals UNDER the platform by wire brushes.

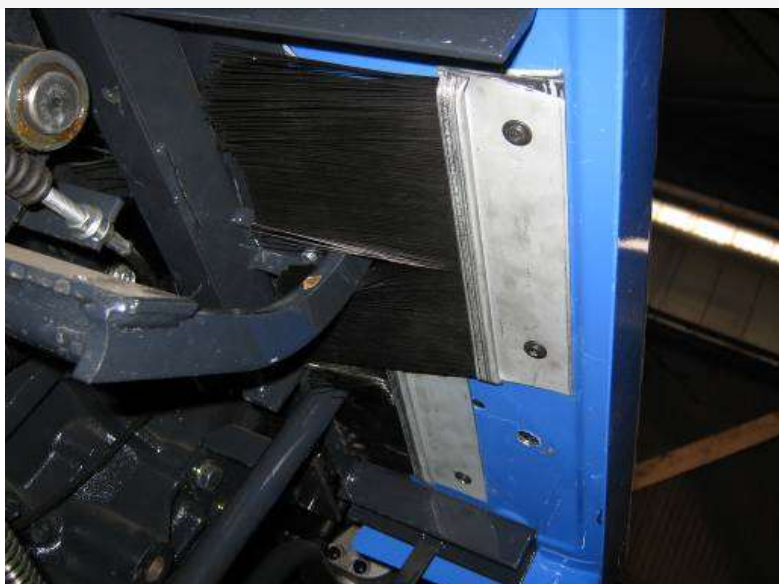


Photo for the closure of the pedals ON the platform by rubber.



. Place the closures and proceed with the installation of the cabin.

- Place on the base of roll-bar original the rear bracket (in the table next, is number 44 *) whit the silent block already mounted (make sure the screw are tightened).



Photos for rear bracket properly screwed

Using the same attachment points and the original screws to lock the roll-bar (number 45 *).
For 2 holes that remain free to use the bolt supplied, screws TE 12x30, with respective nut.

- Place the BRACKET FRONT (number 28*).



Picture to locate the holes of front coupling.

- Remove the caps found under in front (see photo to find out which they are). (make sure the screw are tightened). Place the bracket, and insert the screws provided TE 16X70 where before there were the plugs.





Photo for the front brackets.

Before proceeding make sure that on the uprights there is a side-dish in rubber.
 If you want put the particular number 23* and secure it by drilling screws.
 (discharged the part to allow the pipes of both the heating of both the power supply, of go out).



Photos for particular optional.

Lift the cab, using the appropriate hooks welded.
MAKE ATTENTION because is a operation DELICATE.



- Lower the cab on the machine.
 - Find the centering position with the holes of the rear cross member at the center of the silent block of the rear bracket (number 44*) previously.
Insert the screws TE 12X100 (No. 2), in the silent block centre.
 - Drill with the cab is in place the platform in correspondence of the central hole of the silent-blocks of the front brackets, (**which coincides with the existing hole on the footrests input of the cab**).
- Connect the cab, the platform and the silent block and the front bracket with n ° 1 +1 TE 12 X70 and the supplied bolt M 12, (number 27 *).
- Adjust the doors to obtain the optimum closing.
- Obtained the correct position of the car is possible tighten the screws.

ELEMENTS OF FINISH:

Insert on the front the bracket for arrows. put the indicators originals. Use the extension cable for electrical connection.

To connect the power cords of the arrows you must use the extension cable.



Attach the DOOR PLATE, making sure that the rear glass does not break when opening and than transferring even the light (in this case there is no need to use the extension).



CLOSINGS:

Internal closure for splashguard.



Photo to seal around fender **INTERNAL**.



Photos for the closing rear and front.



HEATING:

Connect the pipe coming out of the cab with the piece diam 16mm included.

Connect the engine with the pipe diam 16mm. Where is indicated on the photo under.



For go.



For return.

At the end of all start the engine and warm it up (minimum 5 min.). Once in a temperature off and wait at least 10 min. it cools. At this point perform topping up the water in the radiator.

The tray of 'water should be positioned with the proper rear bracket.

Where is the rear cross.

See image below:



See image below.



KIT RIVESTIMENTI optional :

Insert the rubbers to close the cracks the levers and the aluminum plates provided. The dishes must and be secured with rubber-tapping screws and they must be on the rubber.

See image below



If you want you can remove the seat before all operation (these too).



Now you must remove the seat.

Continue gluing the rear body and fender (only) and under the seat:



Insert and fix the sheet metals with self-tapping screws. The rubber washer MUST be mounted already,

Insert sheet metals under the dash both right and left.

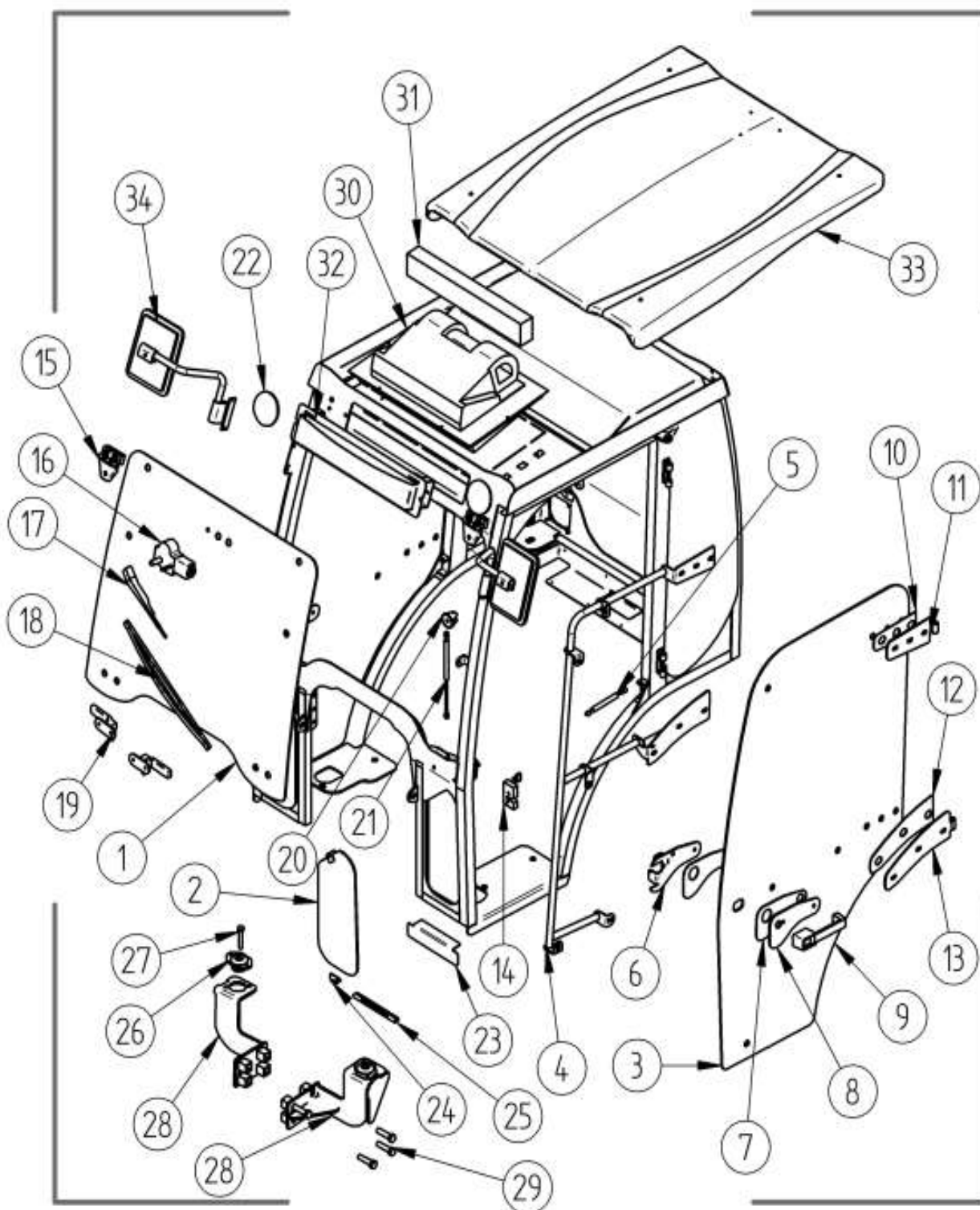


Close the possible slots with silicon.

*We REMAIN at your disposal for any clarification,
Cordially,
Agrital.*

ELENCO PER RICAMBI E SCHEMA COMPONENTI

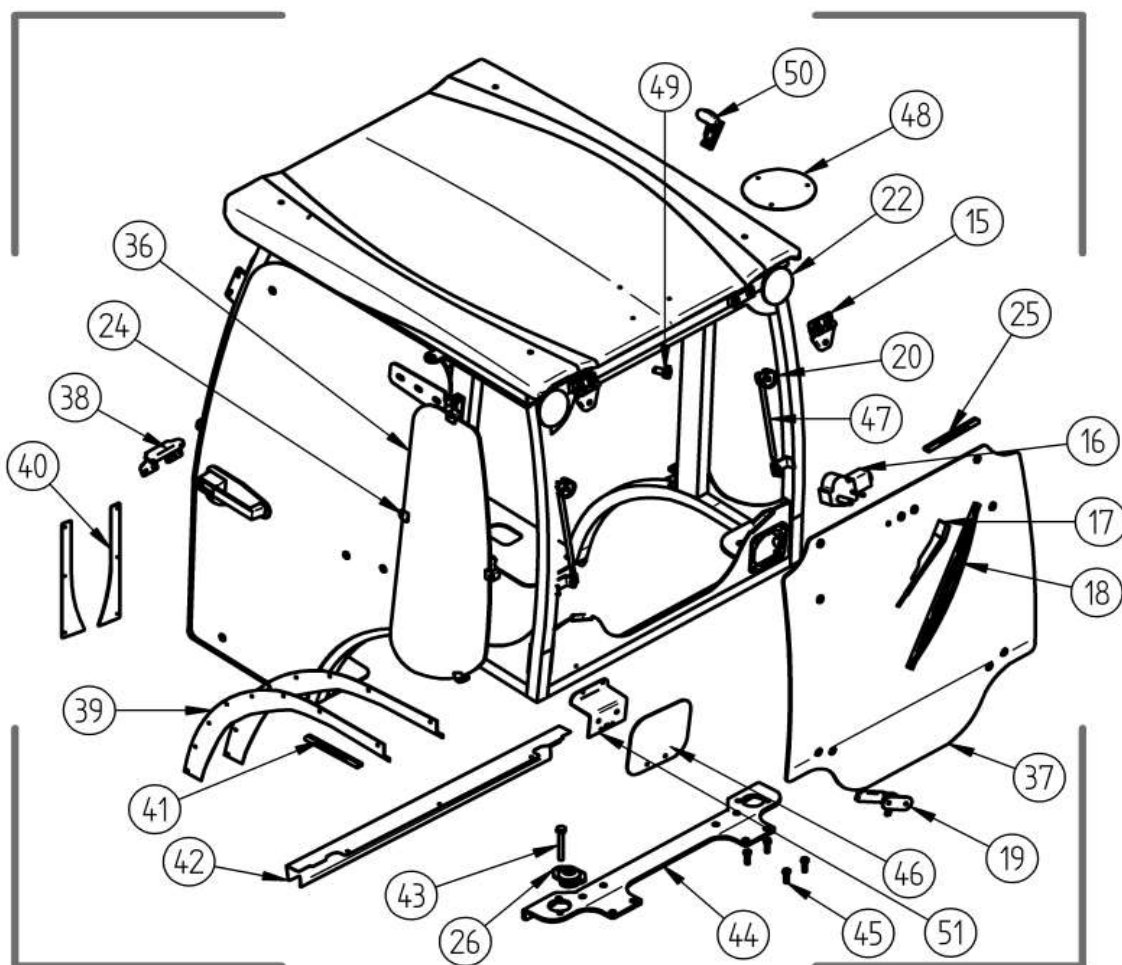
FRONTALE E FIANCATE / Front and sides:



Front and sides parts:

N°	QT	DESCRIZIONE	CODICE
1	1	Glass front opening	5062011000
2	2	Glass front door –OBLO’	5062020000
3	2	Glass door	5062030000
4	1	Door handle big RIGHT	5061056500
4	1	Door handle big LEFT	5061057500
5	2	Shock absorber for door glass L.255.	296190190
6	1	Support lock right	1771060500
6	1	Support lock left	1771059500
7	2	Seal plate handle serr.	1771065000
8	2	Support handle / lock	1771058500
9	2	Door handle with key	290290544
10	4	Rubber for upper hinge door	1771063000
11	2	Hinge upper door right	1771053500
12	8	Rubber for Hinge lower door	1771064000
13	1	Hinge lower door right	1771055500
13	1	Hinge lower door left	1771054500
14	1	Lock right	290290624
14	1	Lock left	290290614
15	2	Hinge Nylon crystal	299190094
16	1	Windshield Wiper motor	292190790
17	1	rod wiper	292190430
18	1	Wiper	292190070
19	1	Handle right for front glass	290290144
19	1	Handle for left front window	290290114
20	2	Attack for crystal shock absorber	294190014
21	2	Shock absorber for door glass L.315	296190100
22	2	Working light ROUND	282190205
23	2	Closure front platform (sheet)	5011033500
24	6	Notepad crystal (2 for door)	291190160
25	mt	Seal crystals	2100060
26	2	Silent block	265700014
27	2	Screw 12x70 UNIK 5737 -10.9	201190212
28	1	Front bracket RIGHT	5061061500
28	1	Front bracket LEFT	5061062500
29	8	Screws16x70 ùUNI 5737 -8.8	201126232
30	1	Heating group -OPTIONAL	1466040400
31	1	Air Filter (only c / heating)	285190040
32	1	Filter Cover (c / heating)	1791056510
32	1	Closing filter compartment (without heating)	1891058500
33	1	Roof (ABS)	6061050310
34	1	Rear view Mirror RIGHT (certified in E3)	293190184
34	1	Rear view Mirror LEFT (certified in E3)	293190204

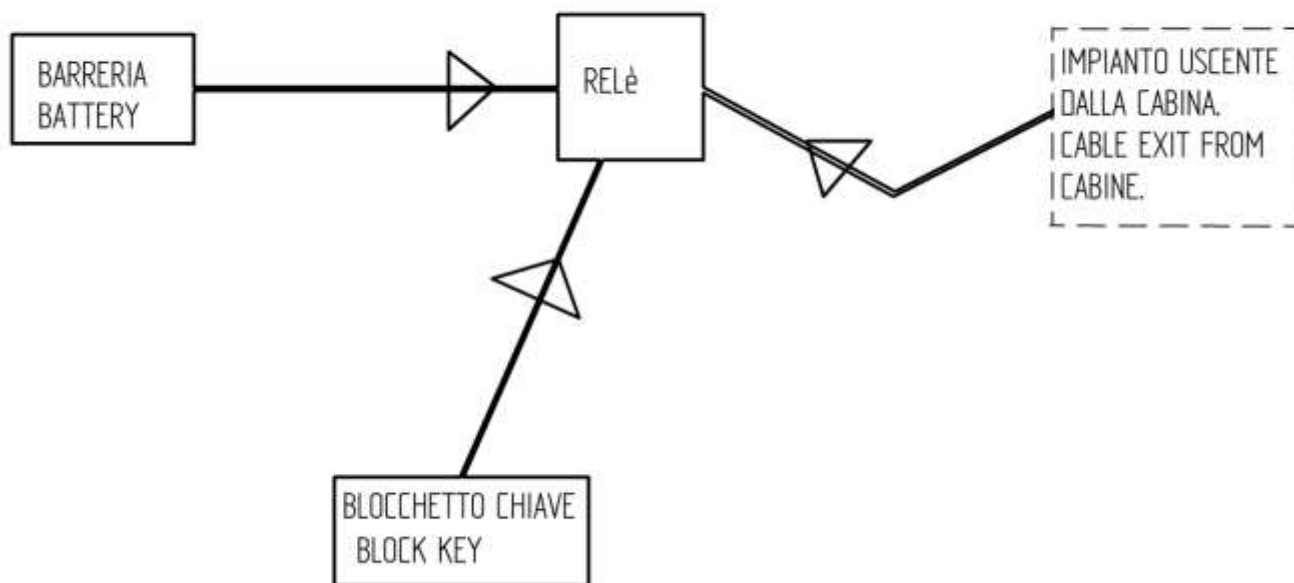
POSTERIORE E CHIUSURE / RearRe and Closures:



Rear and closures parts:

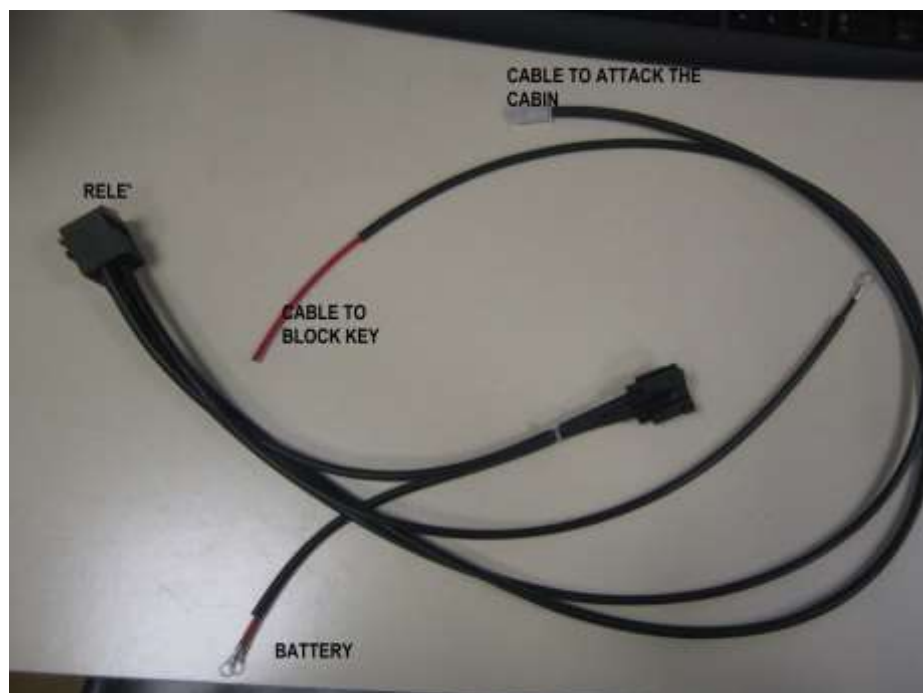
N°	QT	DESCRIZIONE	CODICE
36	2	Crystal Window fixed -	5062049000
37	1	Crystal Rear Steering	506204000
38	2	Port Bracket arrows	6021060500
39	2	Closing round fender (put all 'inside)	5061065500
40	2	Closing inf. around hood	5061063500
41	mt	Gasket for plate	2100040
42	1	Closing Rear whit seal	5061064500
43	2	Screw 12X100 UNI5737 - 10.9	201124292
44	1	Rear bench	5061060500
45	2	Screws No. 3 and No. 1 original +3 +1 lives 10x30	203424092
46	1	License plate	5011034500
47	2	Shock absorber L. 485	296190180
48	1	Socket for Flashing	282190210
49	1	Port Light Bracket	1941080510
50	1	Coat	286190030
16	1	Wiper motor (rear optional)	292190534
17	1	Rod wiper (rear optional)	292190540
18	1	Wiper Blade (Rear optional)	292190070
22	1	Round work lamp (Rear optional)	282190205

ELECTRICAL CONNECTION



FOR CONNECT THE LIGHTS, AND OTHER ACCESSORIES ARROWS FOR STOPPING WITH THE CAR YOU CAN CONNECT AS FOLLOWS:

We remain at your disposal for any clarification



AGRITAL s.r.l.

Via L. Da Vinci, 20
24050 Arzago d'Adda (BG)

-ITALY-

Tel. +039 . 0363.87633

fax. +39 .0363. 87355

www.agritale.com

e-mail = agritale@agritale.com