



INSTALLATION GUIDE

&

SPARE PARTS CATALOGUE

ISEKI TM

Model :

ISEKI = TM3215- TM3215B – TM3245- TM3245B- TM3265 –TM
3265B

MASSEU FAREGUSON = MF1520- MF1520B- MF1523- MF1523B-
MF1525- MF1526- MF1525B

MAINTENANCE GUIDE

Dear Customer,

We thank you for choosing an Agrital cab!

Here's a reference guide for the most common maintenance operation you'll be performing to maintain your new cab efficient and in good state.

CLEANING

To clean the interior, we suggest to remove the carpets and clean them separately, in order not to leave them wet. The fixed linings can be cleaned with simple water.

DOOR ADJUSTMENT

After having installed your new cab, you may need to adjust the door locking by adjusting the attachment of the door latch. This operation must be carried on each time the cab is mounted.

To maintain a good efficiency of the locks, we strongly suggest not to operate the tractor with the doors open, since the vibrations could damage the hinges.

HEATING/VENTILATION SYSTEM (water-cooled tractors only)

In order to switch from the heating to the simple ventilation, the operator has to turn off the hydraulic outlet tap inside the cab.

CLEANING AND CHANGING THE AIR FILTERS

We suggest to clean the intake air filter every 150 working hours with compressed air or a vacuum cleaner.

After 1000 working hours, we suggest to completely clean the air system by using compressed air. To access the system remove the roof (the silicone will have to be removed as well). We suggest to put new silicone back when mounting the roof again.

We suggest to change the air filter once a year.

Carbon activated filters have a very limited life span. We suggest to use them only when dealing with special chemical treatments and to use a standard filter for other operations. Store the activated carbon filter in its package when not in use.

The life span of the filter depends on the working conditions. The mean life span is about 150 working hours.

AIR CONDITIONING SYSTEM

To keep the air conditioning effective, please remember to clean the radiator on the roof and keep the gas on the compressor at level.

To clean the radiator use compressed air. Keep a maximum of 3.5 bar in order not to damage the radiator.

To refill the compressor, do not exceed 0.7 Kg. for big compressors and 0.5 for small compressors and do not put the system under excessive pressure.

For further instructions please refer to the instruction manual of the air conditioning system.

Please do not hesitate to contact us for any question!

AGRITAL S.r.l.

Via Leonardo Da Vinci, 20

24040 Arzago d'Adda

(BERGAMO) - ITALY

TEL : +39-0363-87633

FAX : +39-0363-87355

E-Mail: agritale@agritale.com

WEB site: <http://www.agritale.com>

WARRANTY REGISTRATION

Dear customer,

The warranty is valid only if you fill the form and sent it back to Agrital within 15 days from the date of purchase. The form may be sent by e-mail or by fax.

Model of cab or tractor:

Cab serial number:

Date of purchase:

Dealer's name:

The warranty is valid for 12 months for defective parts, Agrital doesn't recognize the warranty for breakage caused by improper use, normal wear or damage from the user.

For air conditioning system, please fill also the manufacturer's warranty

The customer confirm to have received the owner's manual and the maintenance manual. He has been properly informed by the dealer on the correct use of the cabin. For the use of any personal protective equipment the user must follow the directions of his person in charge for the safety at work.

The dealer confirms that he has installed the cab in according to instruction provided by the manufacturer, in order that the SAE-OECD approval is valid.

Stamp dealer:

Date and place:

Name, Surname or
Company's name:
(block letters)

Signature:

THE ASSEMBLY FOR A CORRECT INSTALLATION OF YOUR CAR.

Follow the following indications:

Remove the front door, the rear roll-bar, the 4 screws fastening the platform found under the original rubber mat (step 1), the rearview mirror, the door plate, handles present on the wings. Puncture or score in correspondence of the holes of the screws of hooking to the footboard the carpet in the upper part at sight (point 1), so as to more easily regain their position being points to be used for the 'hooking of the platforms of entrance to the cab.

Remove the screws (n 2 +2) and store until otherwise indicated.

Photo 1 - Input Plates with screws in the correct position in the finished work.

FOTO 1.



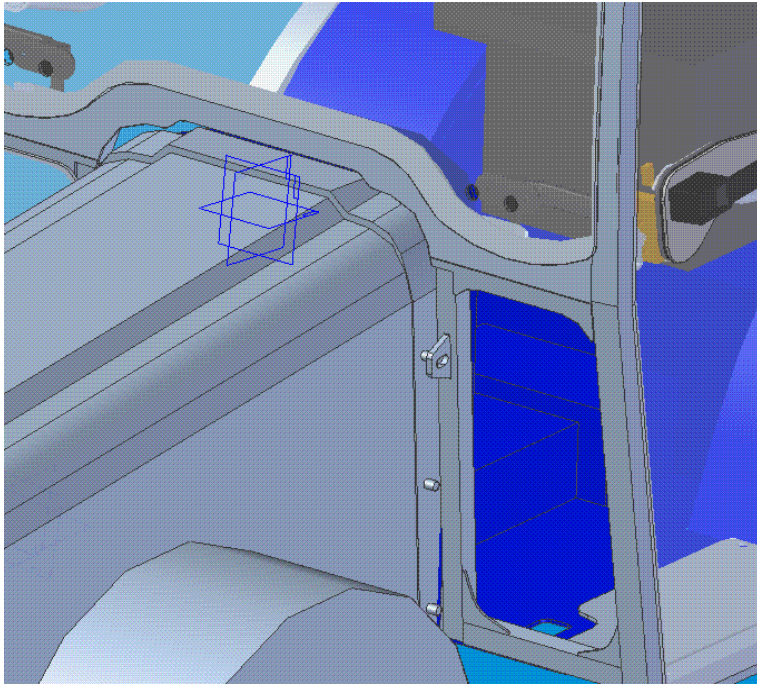
Insert the cylindrical silent blocks (one on a right and left), supplied to 'highest heights of the hole (400 h from the platform) within the existing casing, closed by the original screw. The silent block has a male thread from 8x20 to fit completely and tighten.

FOTO 2.

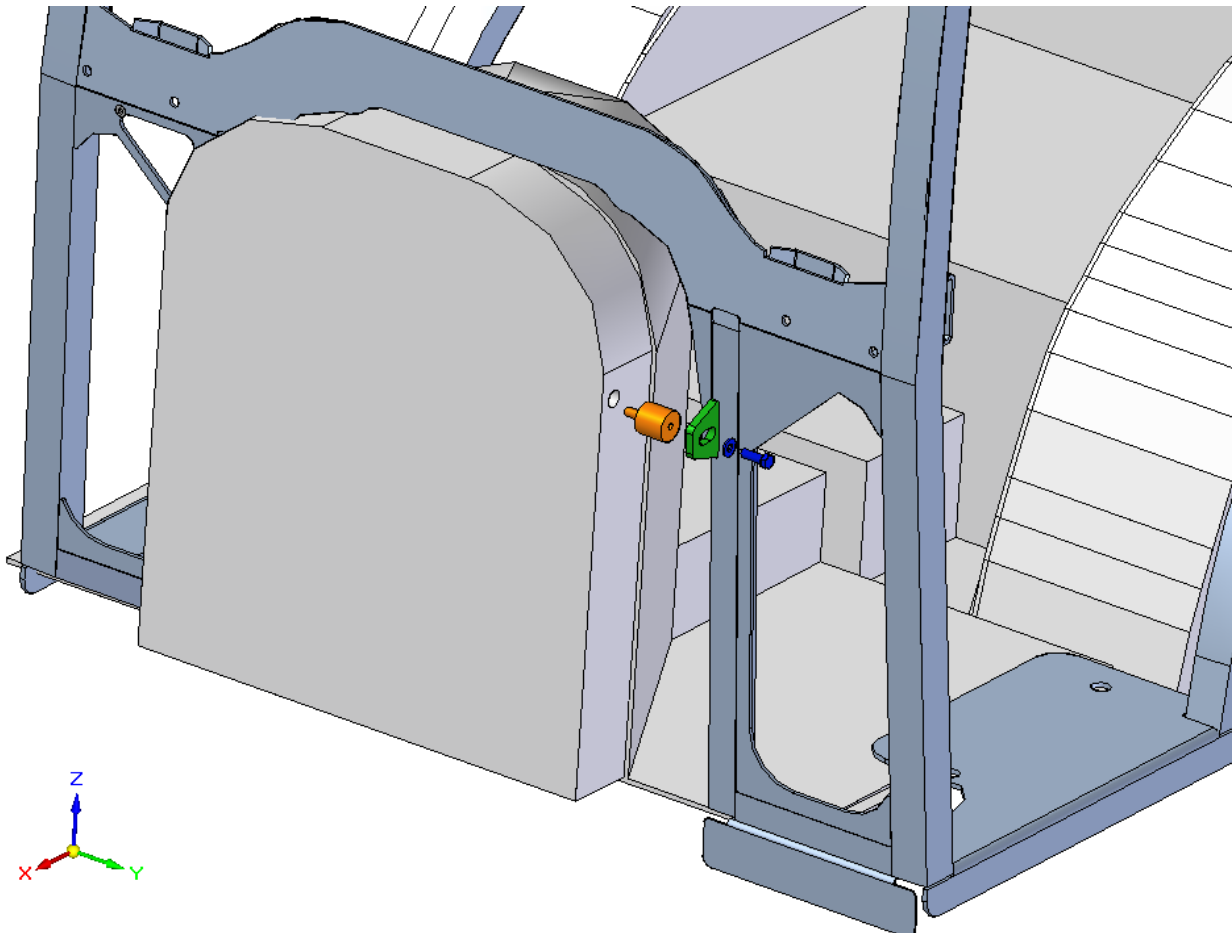


FOTO 3.





Between the cabin and around the hood of the car must enter the anti vibrating.
By placing the prisoner in the existing hole in the lid and the screw to lock the 8x20 cab.



DX= SX

REAR=

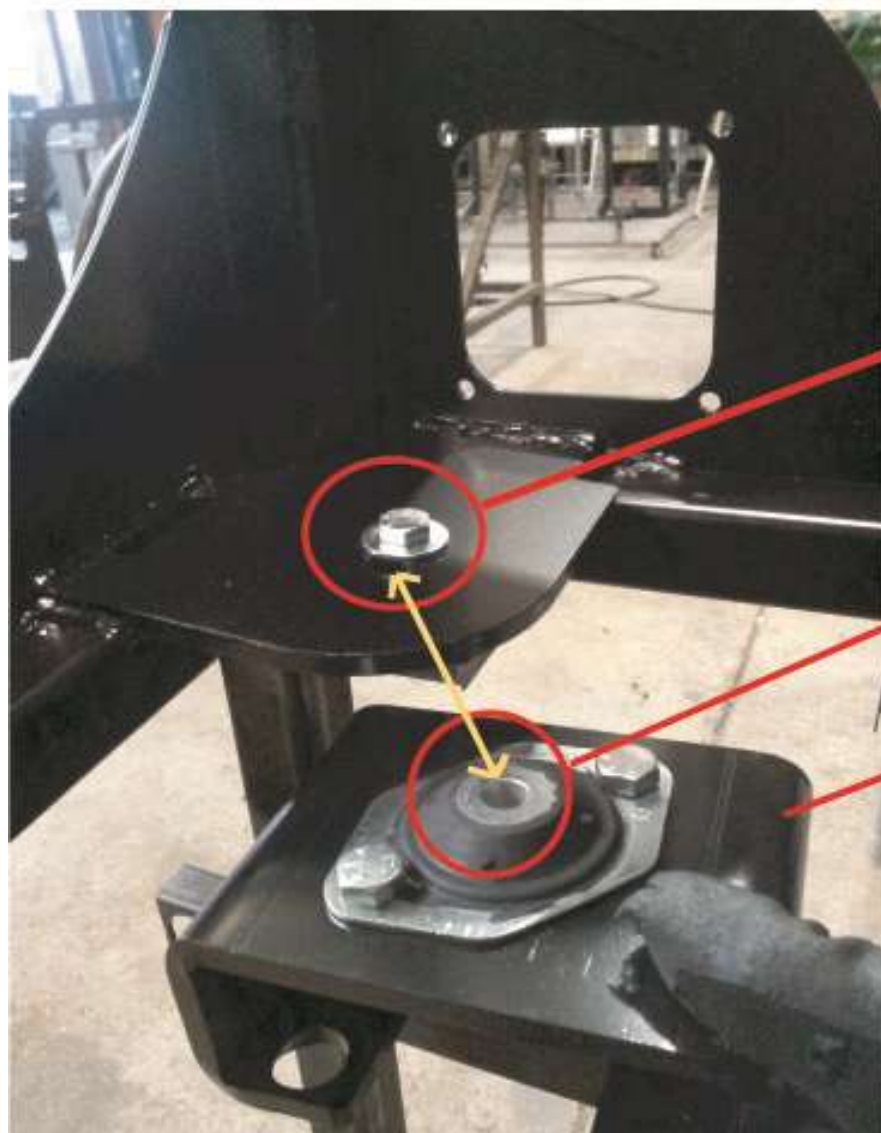


silent block

bracket



Firstly fit the silent-block into the bracket



internal part of the cab

silent block

bracket

the cab has to stay over the brackets, you have to fix the hole (where now you see the gray screw) with the hole of the silent-block

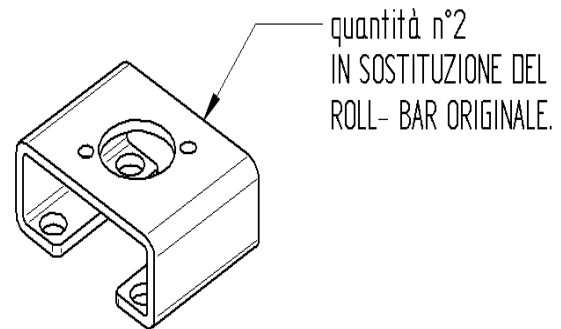
Place the roll bar instead of the two supplied brackets using the same attachment points and the same original nuts.

These brackets are pre-mounted on silent block, make sure the screws are tightened.

FOTO 4



FOTO 4



Attach the adhesive seal in the center of the front uprights to get that close the gaps that remain between the cab and around the bonnet.

Lower the cab on the machine making sure it does not hit anywhere to avoid damaging the body. Leaning against the cab to the footboard find the optimal position so that the screw present at the center of the silent block of the brackets positioned in place of the roll bar you are in. with 's buttonhole of the brackets cantilevered welded to the rear cross member of the cabin.

(see Photo 4 - above).

Lock the platforms' s entry into correspondence with the existing holes using the original screws 10x 25 n° 2+2, previously removed. (The holes marked on the carpet all 'beginning of the assembly is provided corresponding to those of the platforms).

Lock the front silent block (cylindrical, previously bolted to the machine), with 8x20 screws. (See photo 2-3 - above).

Adjust the doors to obtain the optimum closing.

Obtained the correct position of the car to tighten the screws.

In the diagram below we list the positions of the closing plate so as to be inserted and secured with self-tapping screws (supplied).

- Tail plate quantities 1 (it is important to put the seal on the remains in contact with the machine)
- Sheet metal around fenders quantity 2 (one per side)
- Sheet metal for the front of the platform (NOT CLOSE 'OUTPUT CABLE)



Insert the two brackets ARROW in the area between the front door and windscreen ensuring that the latter does not impact the opening.
To connect the power cords of the arrows you must use the extension cable.



- Attach the PORT PLATE, making sure that the back glass does not impact the bottom opening and transfer even the light (in this case there is no need to use the extension).

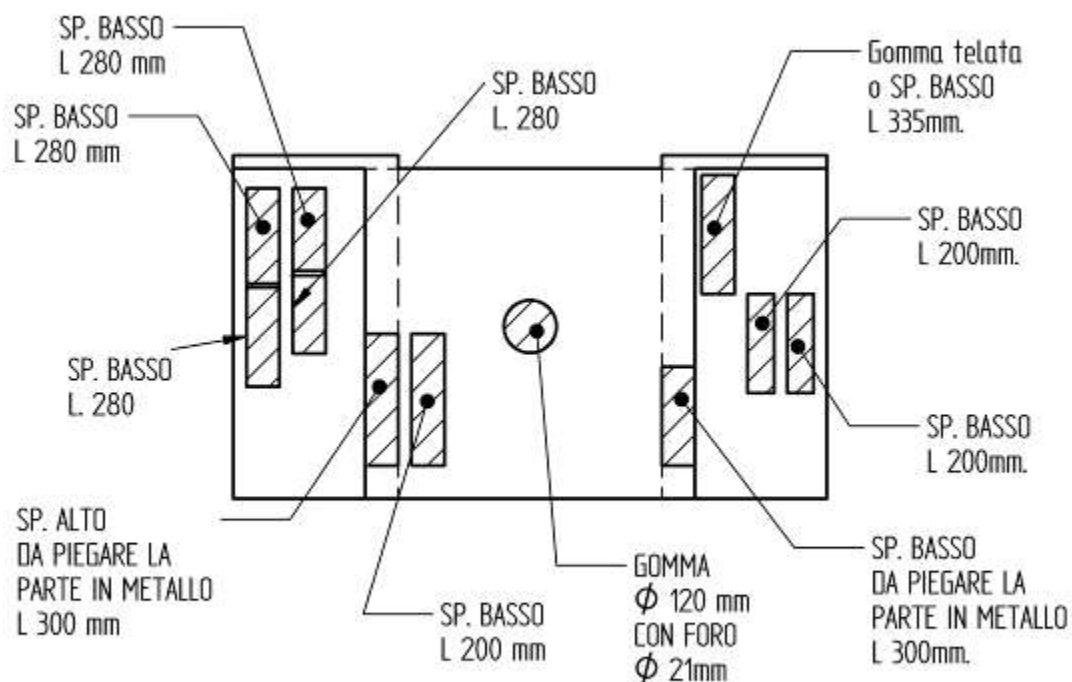


- Insert the supplied BRUSHES.

These brushes must be stare with self-drilling screws and positioned so as to close the holes of the levers that remain. This work implies that there are precise to prevent air infiltration.

To retain the original written in sight because you can get a better aesthetic result, as well as functional, these brushes should enter under the platform so that you do not see anything in the cabin.

SCHEME FOR APPROXIMATE LOCATION TECHNICAL BRUSHES: (see photo)



View for brushes under the levers of round wheel sx.



View for brushes in position under the round wheel sx.



Place the brush with the bristles that cover the cracks of the levers, it crashes the metal part that is in contact with the platform with screws self drilling screws (supplied). The outermost hole should be closed with the toothbrush by bending the aluminum part to have the fixing point.

View brush into position under the round wheel to levers dx.



View brush in position under PLATFORM.

For the levers of the pedals under the platform, perform the same work with

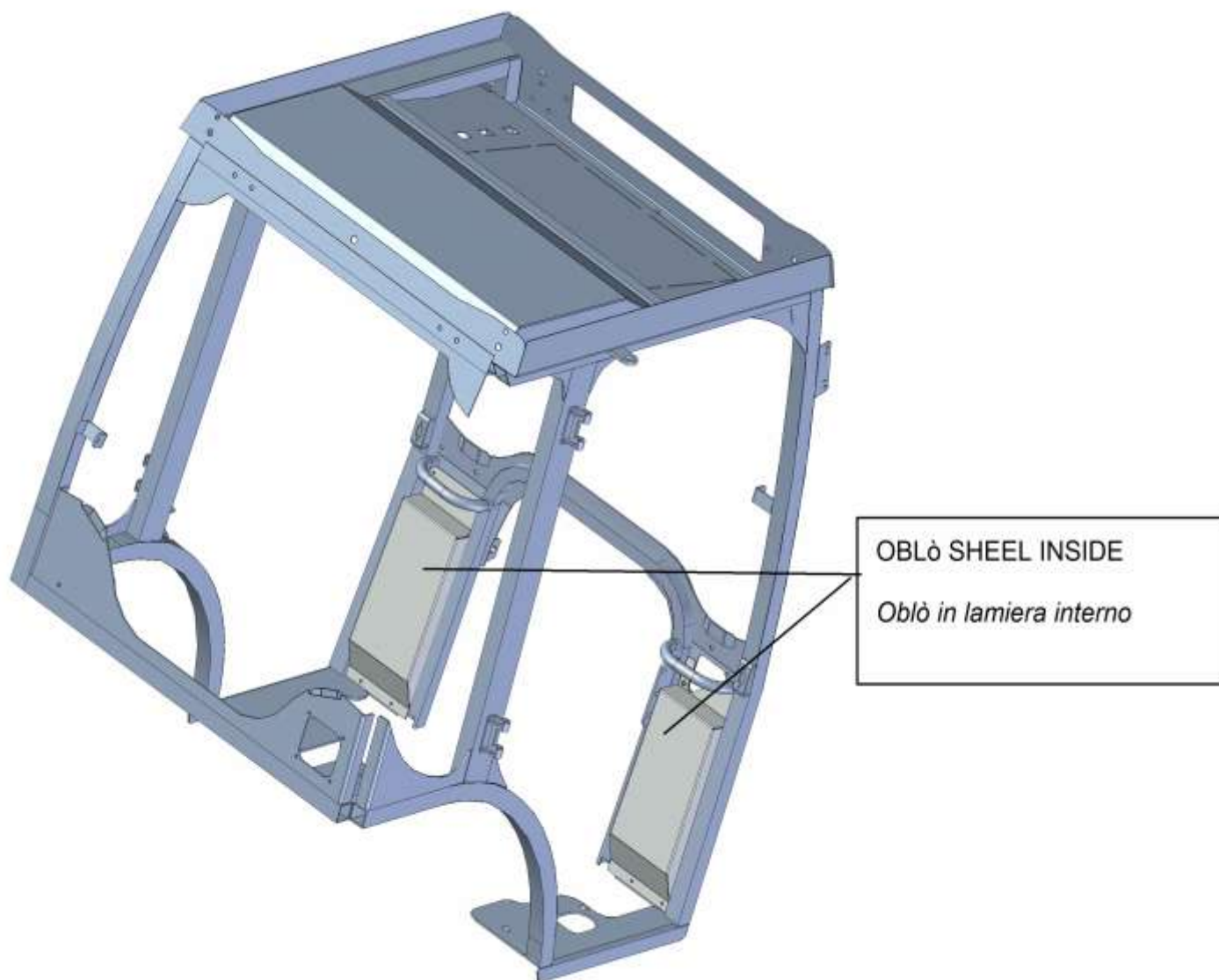
Side SX= n° 1 SP. medio L. 100 mm

Side DX= n° 1 SP. low L. 60mm (small pedal) + n° 1 SP. high L. 2

IF THERE IS THE SHOVEL FRONT:

The portholes are not crystal but sheet metal mounted to the 'interior of the cabin

See image



NOT Use the front silent block for fixing but use the holes on the platforms drilling platform in the two points instead of one.

WARNING:

INSERT DELIVERY tube coming out of the booth set up, the original joint that is located approximately in half and the left side of the engine. (See photo below to find the link).



FOTO 10.

INSERT the tube that comes out of RETURN crafted from the cab to the fitting original which is located in the top part of the engine compartment. (See photo below to find the link).



FOTO 11.

At the end of all start the engine and warm it up (minimum 5 min.). Once in a temperature off and wait at least 10 min. it cools. At this point run topping up of water in the radiator.



To make the operation easier, is given a tube supplied L.150 mm internal diameter 16mm with a connection to a 'ends.

The narrowest part of this fitting is inserted into the pipes of supply and return lines that have an internal diameter 10 mm, while the 'free end of the tube diameter. 16 mm is connected to the couplings of the original engine as described previously.

At the end of all start the engine and warm it up (minimum 5 min.). Once in a temperature off and wait at least 10 min. it cools. At this point perform topping up the water in the radiator

We remain at your disposal for any clarification.

KIT COATINGS optional: DO BEFORE THE ASSEMBLY OF CABIN

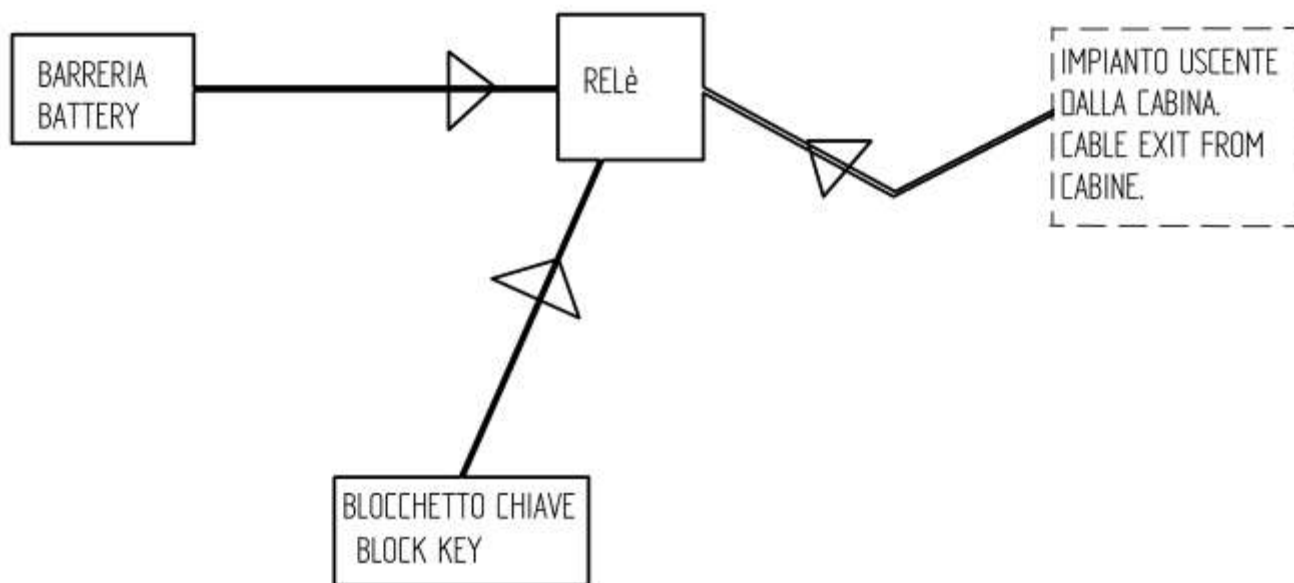
Insert the seals to close the gaps using the levers tires and aluminum plates supplied.
The dishes must be insert over the rubber and secured with self-tapping screws.

Remove the seat and proceed pasting the rear bumper and fenders (2 parts) and underseat:



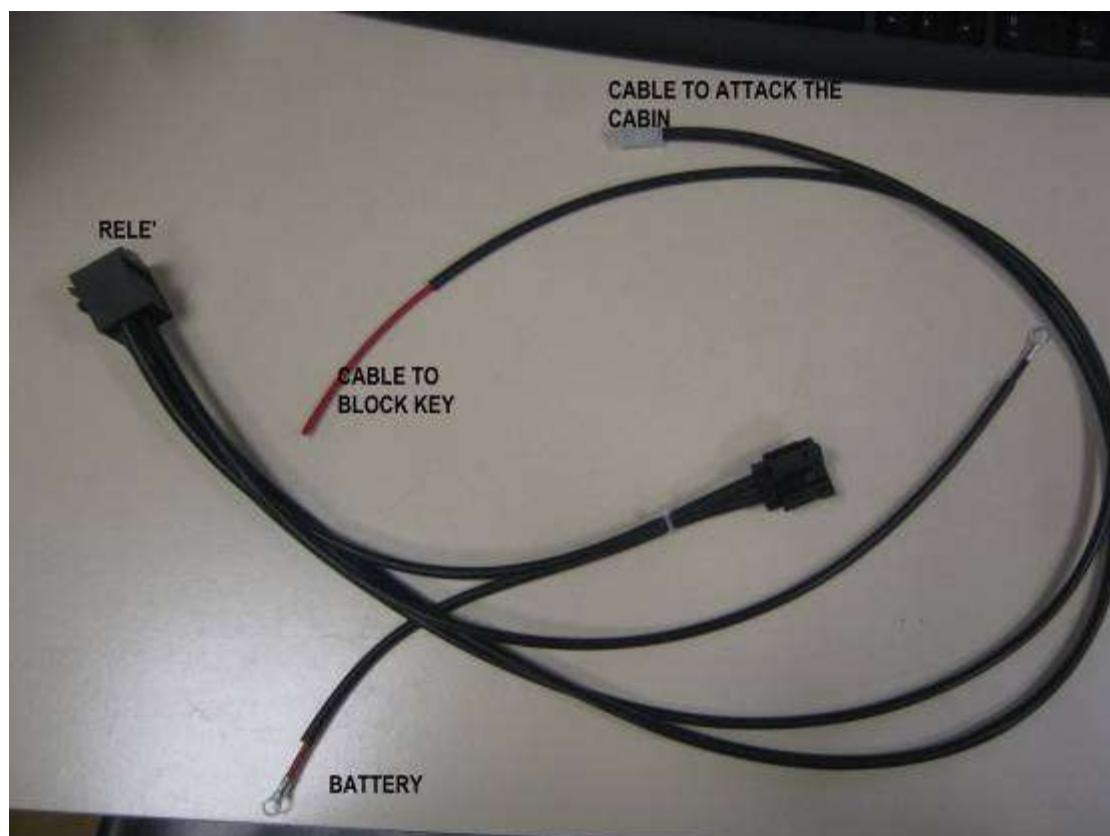
For cracks to use the silicone.
THE COATING BADGE AND INSIDE THE ORIGINAL INSTRUMENT PANEL (TO LOOSEN).

ELECTRICAL CONNECTION



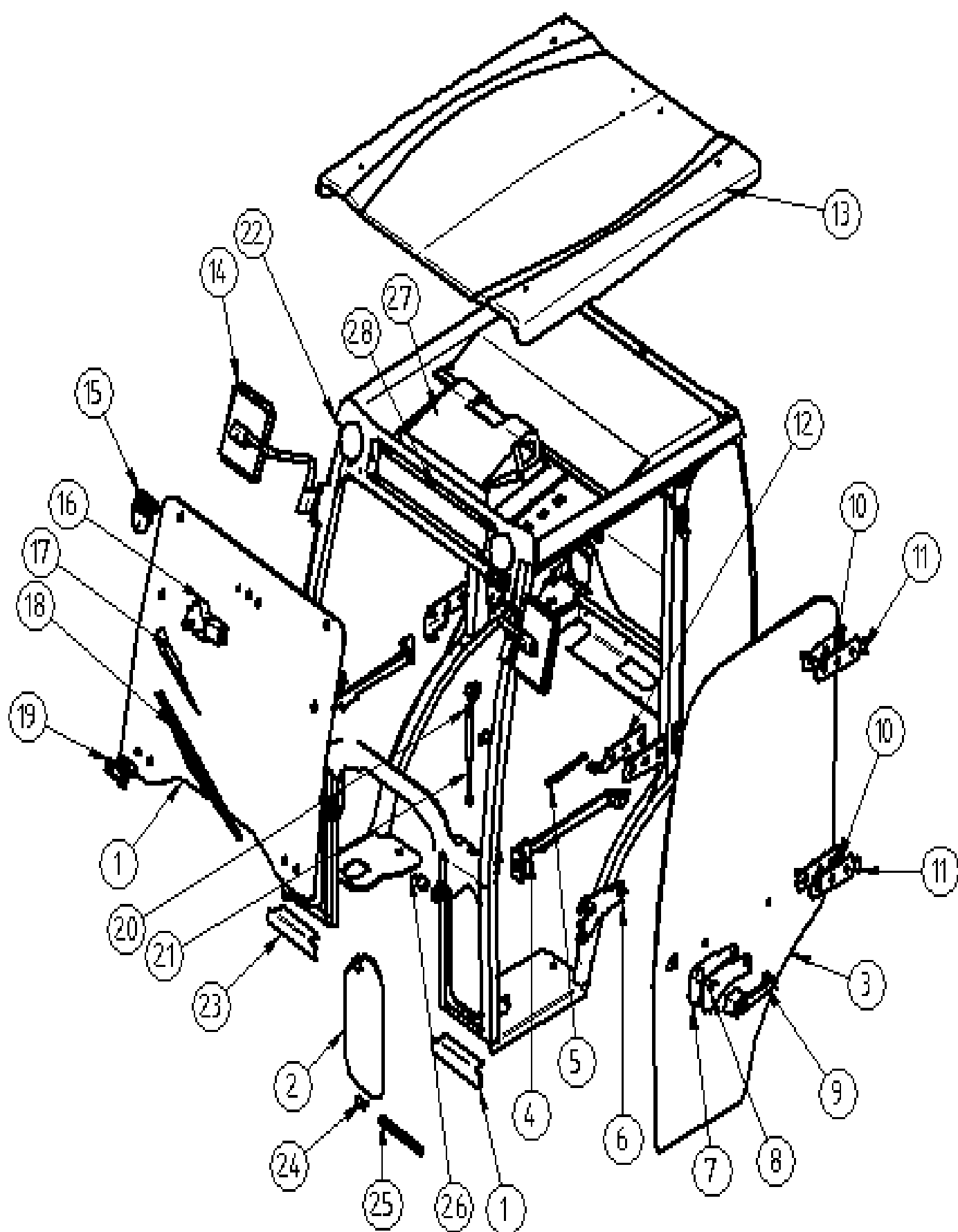
FOR CONNECT THE LIGHTS, AND OTHER ACCESSORIES ARROWS FOR STOPPING WITH THE CAR YOU CAN CONNECT AS FOLLOWS:

We remain at your disposal for any clarification



ELENCO PER RICAMBI E SCHEMA COMPONENTI

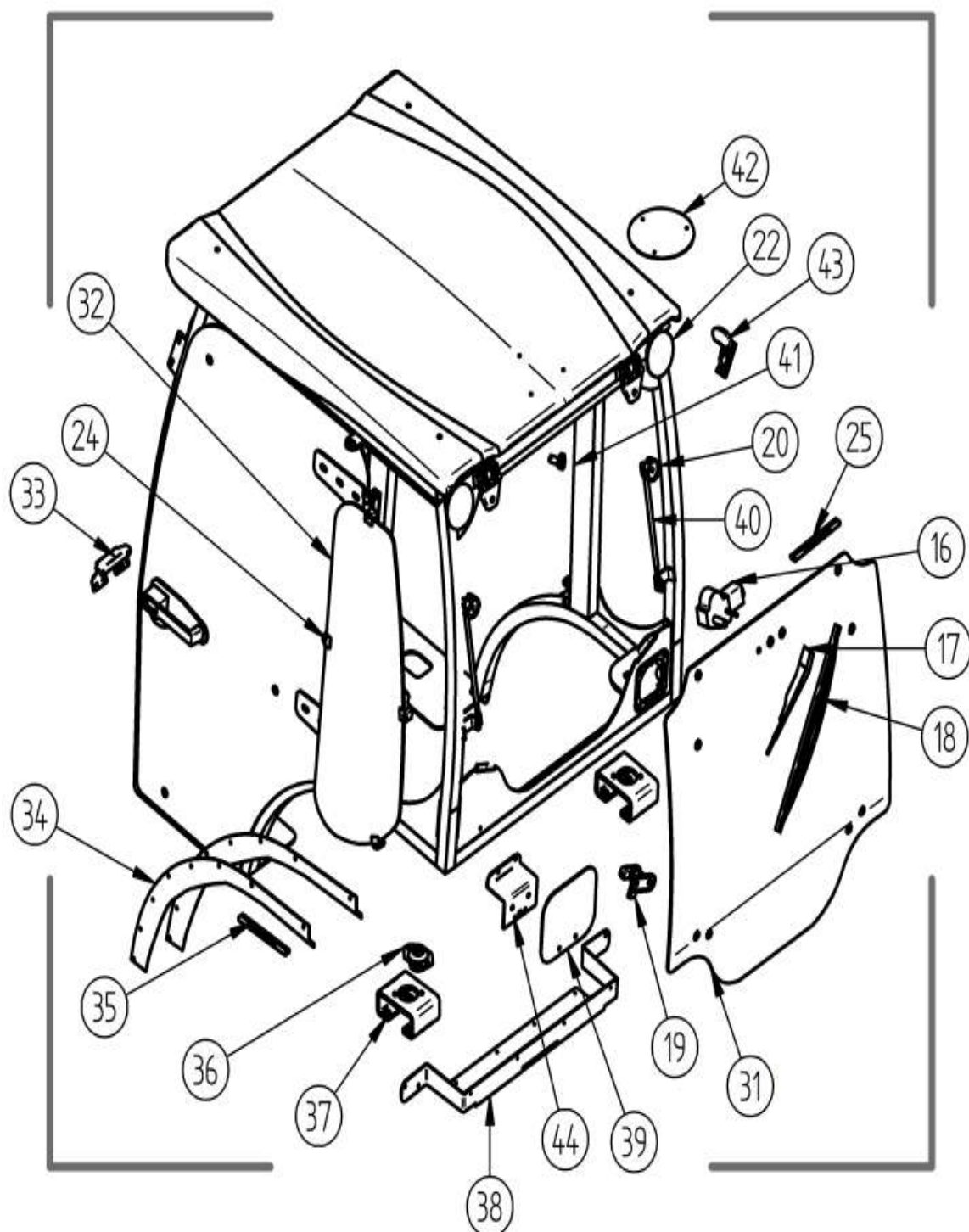
FRONTALE E FIANCATE:



ELENCO COMPONENTI FRONTALE e PORTE:

N°	QT	DESCRIZIONE	CODICE
1	1	Crystal Front	5012011000
2	2	Crystal oblò	5012049000
3	2	Crystal door	5012030000
4	1	Handle whit lock for door right	290290784
4	1	Handle whit lock for door left	290290794
5	2	Shock absorber for crystal door L. 255	296190190
6	1	Support RIGHT for lock	5011054500
6	1	Support LEFT for lock	5011055500
7	2	Seal plate handle lock	1771065000
8	2	Plate to handle lock	1771058500
9	2	Handle button - complete -	290290544
10	8	Seal for Door Hinge	1771063000
11	4	Hinge for Door	1771053500
12	1	Plate for attack for right Shock Port	5011043500
12	1	Plate for attack for left Shock Port	5011044500
13	1	<i>Roof (ABS)</i>	6061050310
14	1	Rear view mirror RIGHT (certified in E3)	293190284
14	1	Rear view mirror LEFT (certified in E3)	293190294
15	1	Hinge crystal - complete (Nylon)-	299190094
16	1	Windshield wiper	292190534
17	1	Rod wiper	292190540
18	1	Wiper	292190534
19	1	Handle right with central handle	290290114
19	1	Handle left with central handle	290290144
20	2	Attack for crystal shock absorber	294190014
21	2	Shock crystal front	296190110
22	2	Working light ROUND	282190205
23	2	Front for platform (sheet)	5011033500
24	4	Notepad crystal (2 per door)	291190160
25	mt	Seal crystals	2100060
26	mt	Silent block (cylinder)	265700040
27	1	Heating group -OPTIONAL	1466040400
28	1	Air Filter – with heating	285190040
29	1	Filter Cover -with heating	1791056510

SCHEMA COMPONENTI POSTERIORE COMPLEMENTI:



SCHEMA COMPONENTI POSTERIORE COMPLEMENTI:

N°	QT	DESCRIZIONE	CODICE
31	1	<i>Crystal Rear</i>	5012040000
32	2	<i>Crystal window fix</i>	5012020000
33	2	<i>Plate port arrows</i>	6021060500
34	2	Closing round fender (put inside)	5011065500
35	mt	Seal sheels	2100040
36	2	<i>Silent Block</i>	265700014
37	2	<i>Bracket for roll- bar</i>	5011062500
38	1	<i>Closure rear (with rubber)</i>	5011066500
39	1	<i>License plate plane</i>	5011034500
40	2	<i>Shock absorber L 485</i>	296190180
41	1	<i>Attack flashing</i>	282190210
42	1	<i>Plate for falshing</i>	1941080510
43	1	<i>Coat Hook (only with heating)</i>	286190030
44	1	<i>License plate (attack the cabin)</i>	5011134500

16	1	<i>Wiper motor (rear optional)</i>	292190534
17	1	<i>Rod wiper (rear optional)</i>	292190540
18	1	<i>Wiper (rear optional)</i>	292190070
22	1	<i>Working light ROUND (rear optional)</i>	282190205

We remain at your disposal for any clarifications,
cordially
Agrital.

AGRITAL s.r.l.

Via L. Da Vinci, 20
24050 Arzago d'Adda (BG)

-ITALY-

Tel. +039 . 0363.87633

fax. +39 .0363. 87355

www.agritale.com

e-mail = agritale@agritale.com