



INSTALLATION GUIDE

&

SPARE PARTS CATALOGUE

ISEKI TXG series

MF GC series

MAINTENANCE GUIDE

Dear Customer,

We thank you for choosing an Agrital cab!

Here's a reference guide for the most common maintenance operation you'll be performing to maintain your new cab efficient and in good state.

CLEANING

To clean the interior, we suggest to remove the carpets and clean them separately, in order not to leave them wet. The fixed linings can be cleaned with simple water.

DOOR ADJUSTMENT

After having installed your new cab, you may need to adjust the door locking by adjusting the attachment of the door latch. This operation must be carried on each time the cab is mounted.

To maintain a good efficiency of the locks, we strongly suggest not to operate the tractor with the doors open, since the vibrations could damage the hinges.

HEATING/VENTILATION SYSTEM (water-cooled tractors only)

In order to switch from the heating to the simple ventilation, the operator has to turn off the hydraulic outlet tap inside the cab.

CLEANING AND CHANGING THE AIR FILTERS

We suggest to clean the intake air filter every 150 working hours with compressed air or a vacuum cleaner.

After 1000 working hours, we suggest to completely clean the air system by using compressed air. To access the system remove the roof (the silicone will have to be removed as well). We suggest to put new silicone back when mounting the roof again.

We suggest to change the air filter once a year.

Carbon activated filters have a very limited life span. We suggest to use them only when dealing with special chemical treatments and to use a standard filter for other operations. Store the activated carbon filter in its package when not in use.

The life span of the filter depends on the working conditions. The mean life span is about 150 working hours.

AIR CONDITIONING SYSTEM

To keep the air conditioning effective, please remember to clean the radiator on the roof and keep the gas on the compressor at level.

To clean the radiator use compressed air. Keep a maximum of 3.5 bar in order not to damage the radiator.

To refill the compressor, do not exceed 0.7 Kg. for big compressors and 0.5 for small compressors and do not put the system under excessive pressure.

For further instructions please refer to the instruction manual of the air conditioning system.

Please do not hesitate to contact us for any question!

AGRITAL S.r.l.
Via Leonardo Da Vinci, 20
24040 Arzago d'Adda
(BERGAMO) - ITALY
TEL : +39-0363-87633
FAX : +39-0363-87355
E-Mail: agrital@agrital.com
WEB site: <http://www.agrital.com>

WARRANTY REGISTRATION

Dear costumer,

The warranty is valid only if you fill the form and sent it back to Agrital within 15 days from the date of purchase. The form may be sent by e-mail or by fax.

Model of cab or tractor:

Cab serial number:

Date of purchase:

Dealer's name:

The warranty is valid for 12 months for defective parts, Agrital doesn't recognize the warranty for breakage caused by improper use, normal wear or damage from the user.

For air conditioning system, please fill also the manufacturer's warranty

The customer confirm to have received the owner's manual and the maintenance manual. He has been properly informed by the dealer on the correct use of the cabin. For the use of any personal protective equipment the user must follow the directions of his person in charge for the safety at work.

The dealer confirms that he has installed the cab in according to instruction provided by the manufacturer, in order that the SAE-OECD approval is valid.

Stamp dealer:

Date and place:

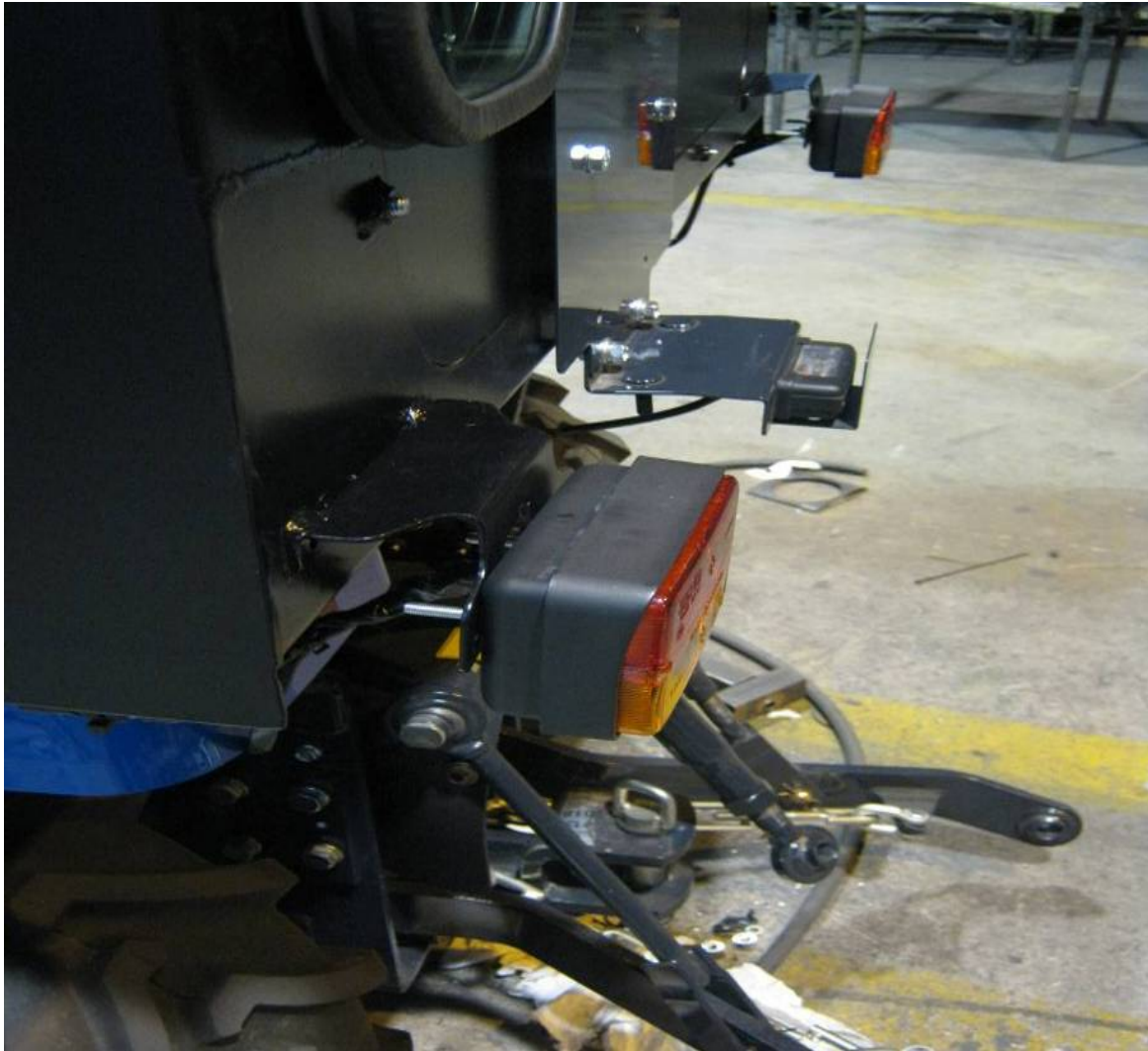
Name, Surname or
Company's name:
(block letters)

Signature:

Remove:

- Support handbrake
- Remove the hydraulic distributor

Remove the rearview mirror and the electrical wires of the headlights on the roll bar, remove the roll bar and the plate holder.



Attention:

the headlights of the roll bar must be removed:
divide the headlight to the rear.

Will be placed on the cab at the end.

remove the seat, put under the seat the rubber, puncture the rubber to put the seat.

Remove the rear wheels to put the brush
closing in this way:

- Pedal right: h.150mm L= 150mm (1), L=100mm (1), L=80mm (1)
- Pedal left: h.150mm L= 120mm (1)
- Level left: h.50mm L=220mm (2),L= 180mm (1)
- Level right: h.50mm L= lunghezza 310mm (1),L= 140mm (2), L=180mm (1)
- KNOB: h.50mm L= 80mm (1)

On the dais unscrew the 4 screws (2 on the right and 2 on the left) as shown in PHOTO and drill the original carpet in the holes of the screws removed.

(See photo)



Stick the adhesive gasket 5x25 under the rear cross member (total 2 meters) and lower the cabin on the machine.

Screw the rear cabin to the hardware of the roll bar using the original nuts.

NB: Attach the bracket to its original position even handbrake.

Attach the front cabin in the holes created on the carpet of the platform, do not use the original screws but the screws M8x40 dates supplied (4 screws).

Fix the hydraulic distributor welded to the bracket that is located on the rear cross member. Connect the tank to the filler neck welded to the cabin via a rubber hose and nuts provided. (See photo)



Mount license plate on the rear bulkhead. Drilling (diameter 9cm) the rear bulkhead and the license plate itself.

Screw the plate to the bulkhead door by inserting plastic spacer provided (used by thickness).
Reconnect the wires of the light plate holder.



Mount rear lights (removed earlier) to brackets welded to the cab, using screws M5x16 and then reconnect the wires.

Mount the headlights in the same manner and using the extension (n. 2) provided for the connection.

Assemble the closure of the fender right and left using the self-tapping screws for fixing to the side of the cabin, the seal mounted previously on the closure, must remain towards the fender and if necessary seal with the silicone between the side of the cabin and the closure.



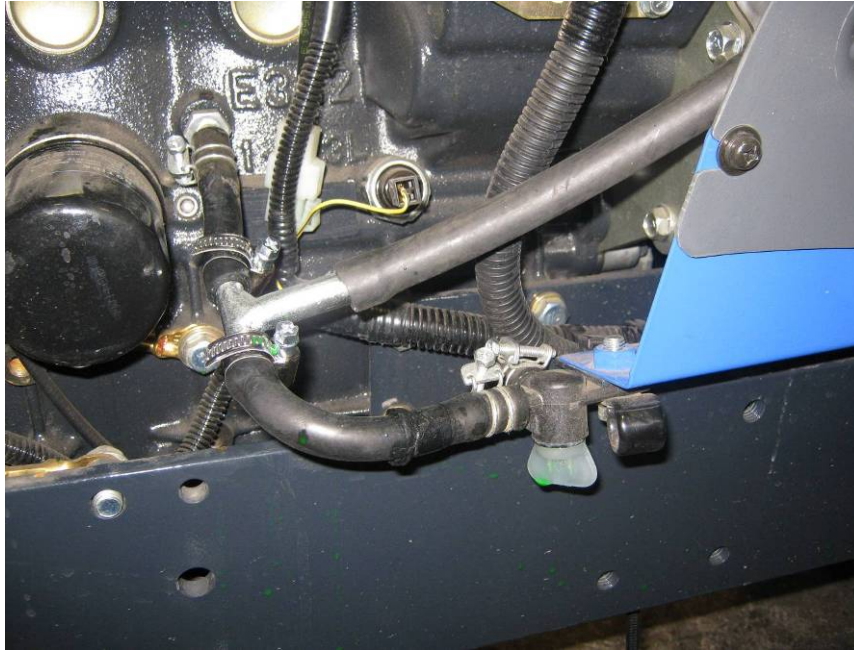
HEATING (OPTIONAL):

Fasten the heating tubes making them pass below the footrest and to fasten them with the clamps provided.

Connect the pipes to the cooling system of the engine by means of the fittings to "T" supplied.

After cutting the original hoses.

(See photo below)



Connect the electrical system of the car to the starter motor of the tractor.

After connecting the heating, start the tractor engine and heating for a few minutes, turn off below the engine and check the coolant level, and if necessary, make the topping.

CLOSINGS:

Remove the two front door (right and left) and fix the front side panels (with gasket already mounted) to the cabin.

FOTO 1



FOTO 2



Silicone bulkheads and reassemble the door. A closed hood, mount the central bulkhead (with gasket

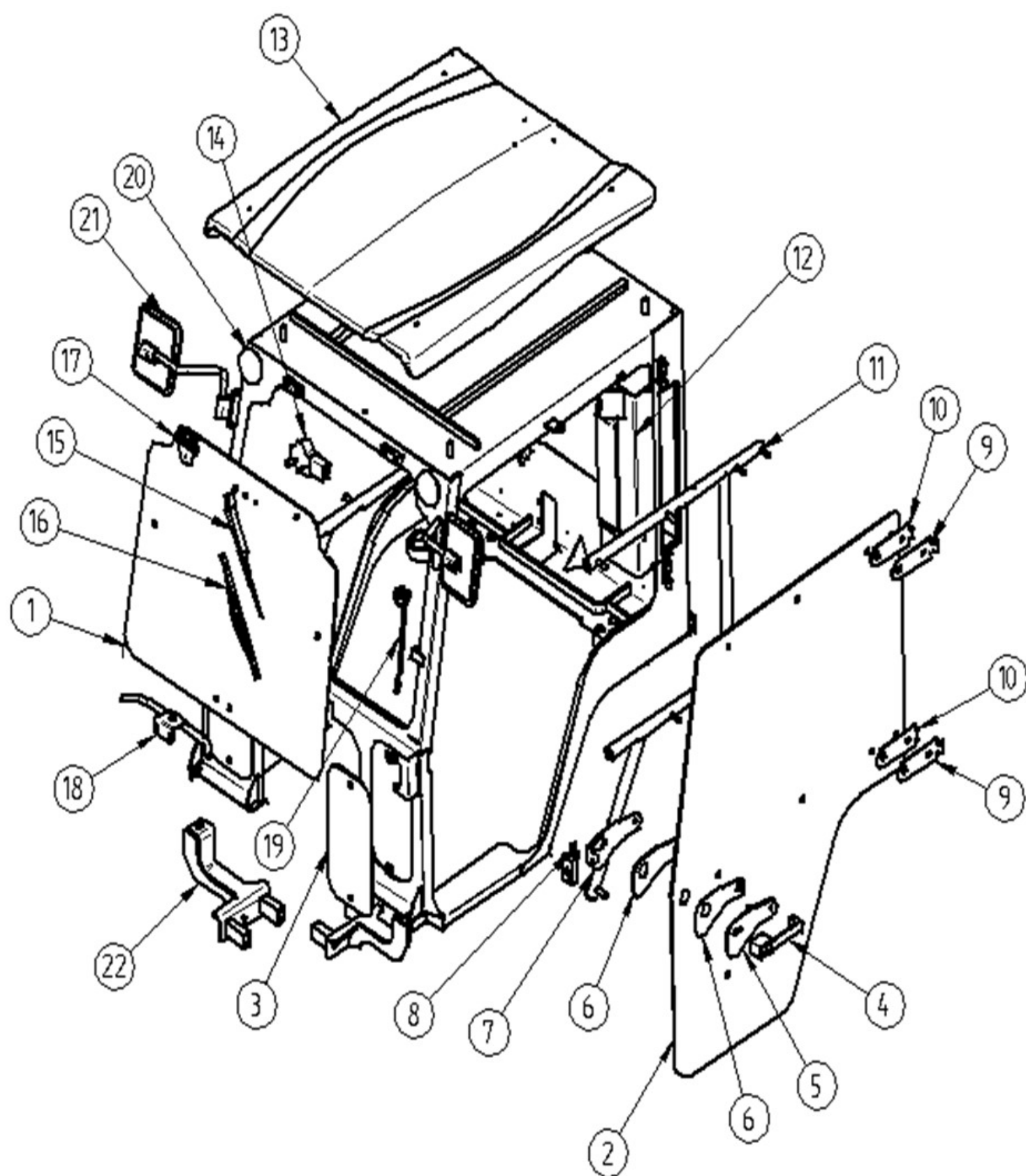
Already mounted) and secure with n°4 knobs M6 provided. To allow an easy opening of the bonnet bulkhead must not be siliconized.



Mount the support of the tie rod 3 point below the lower rear cross member using n ° 2 screws M8.

N.B.: THE BULKHAED MUST BE FIXED WHEN TRACTOR MOVES.

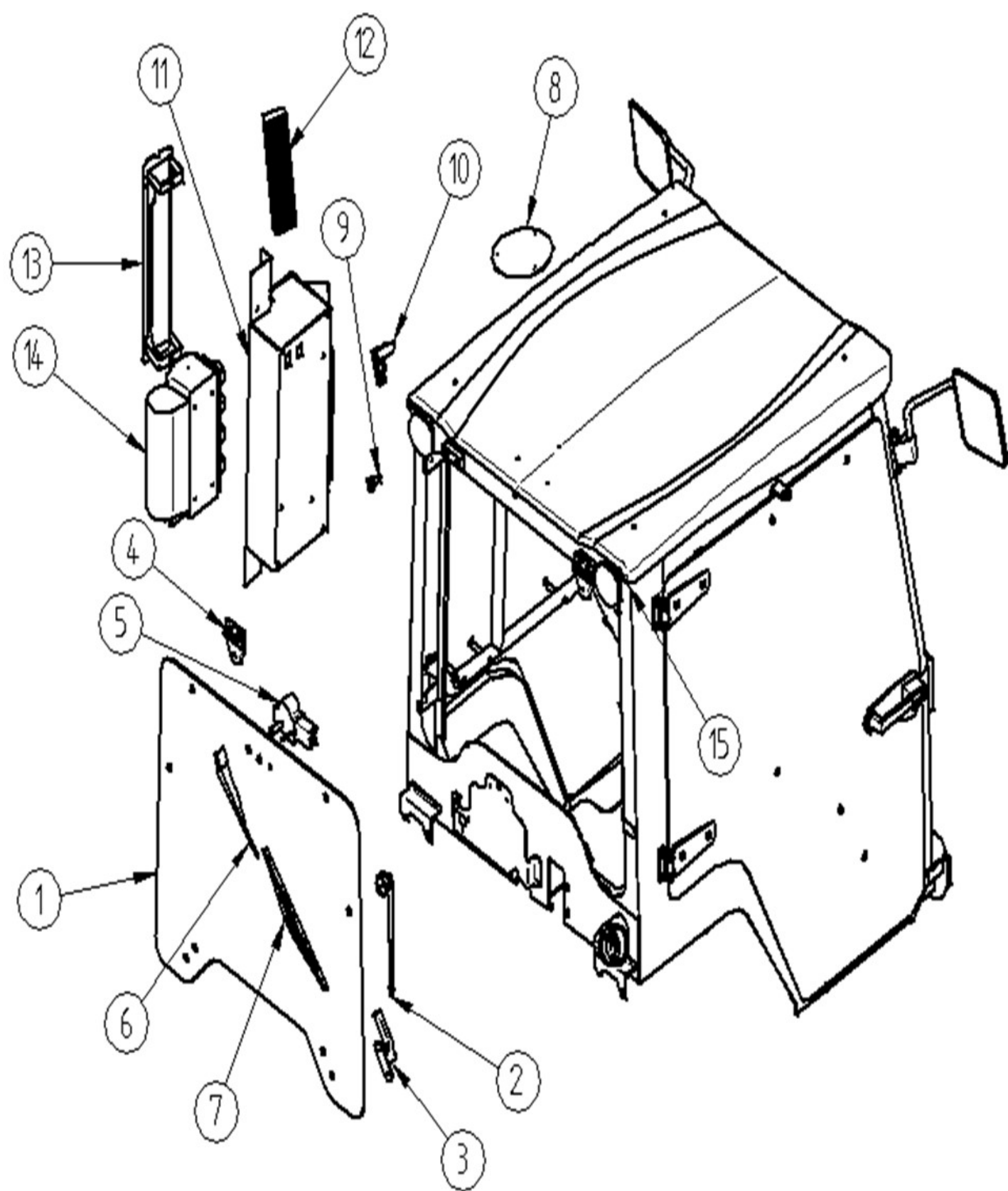
PARTS FRONT and SIDES



PARTS FRONT and SIDES

N°	QT	DESCRIZIONE	CODICE	
1	1	Crystal front	5092010000	
2	2	Crystal oblò fix	5092011000	
3	2	Crystal door	5092013000	
4	2	Handle button	290290544	
5	2	Support for handle	1771058500	
6	2	Seal for plate handle button	1771065000	
7	2	Plate support lock	1771059500	1771060500
8	2	Lock (right and left)	290290614	290290624
9	4	Hinge handle door	6061067500	
10	4	Seal for hinge handle door	6061078000	
11	1+1	Handle right and left	6151053500	6151054500
12	1	Shock absorber for door	296190100	
13	1	Light	282190254	
14	1	Wiper motor	292190790	
15	1	Rod wiper	292190540	
16	1	Wiper blade L. 400	292190070	
17	2	Hinge nylon	299190094	
18	1	Handle for front crystal	1431158500	
19	2	Shock absorber for front crystal	296190190	
20	2	Light work round	282190205	
21	2	Rearview mirror (right and left)	293190204	293190184
23	2	Front BRACKET right and left	6151055500	6151056500
23	2	Roof in ABS	6061050310	
24	1	Closing right inside lower front	5091053500	
25	1	Closing left inside lower front	5091054500	
26	1	Closing for hood	5091055500	

PARTS REAR and COMPONENTS



PARTS REAR and COMPONENTS

N°	QT	DESCRIZIONE	CODICE	
1	1	<i>Crystal rear</i>	6152012000	
2	2	<i>Shock absorber for crystal rear</i>	296190180	
3	2	<i>Handle for crystal rear</i>	290290144	290290114
4	2	<i>Hinge nylon</i>	299190094	
5	1	<i>Wiper motor (optional)</i>	292190534	
6	1	Rod wiper (optional)	292190540	
7	1	<i>Wiper blade (optional)</i>	292190070	
8	1	<i>Base to attack lamp</i>	1941080510	
9	1	<i>Attack for lamp</i>	282190210	
10	1	<i>Clothes hangers</i>	286190030	
11	1	<i>Box for heating UNTIL 2015</i>	60610795/10	
14	1	<i>Heating group (optional) UNTIL 2015</i>	28342000	
12	1	<i>Filter UNTIL 2015</i>	285190220	
13	1	<i>Box for filter UNTIL 2015</i>	6066512500	
13	1	<i>Closing whitout heating UNTIL 2015</i>	1891058500	
15	1	<i>Work light round</i>	282190205	

FOR CABIN WITH HEATING * PROVIDED BY THEN IN 2015:

* OPTIONAL

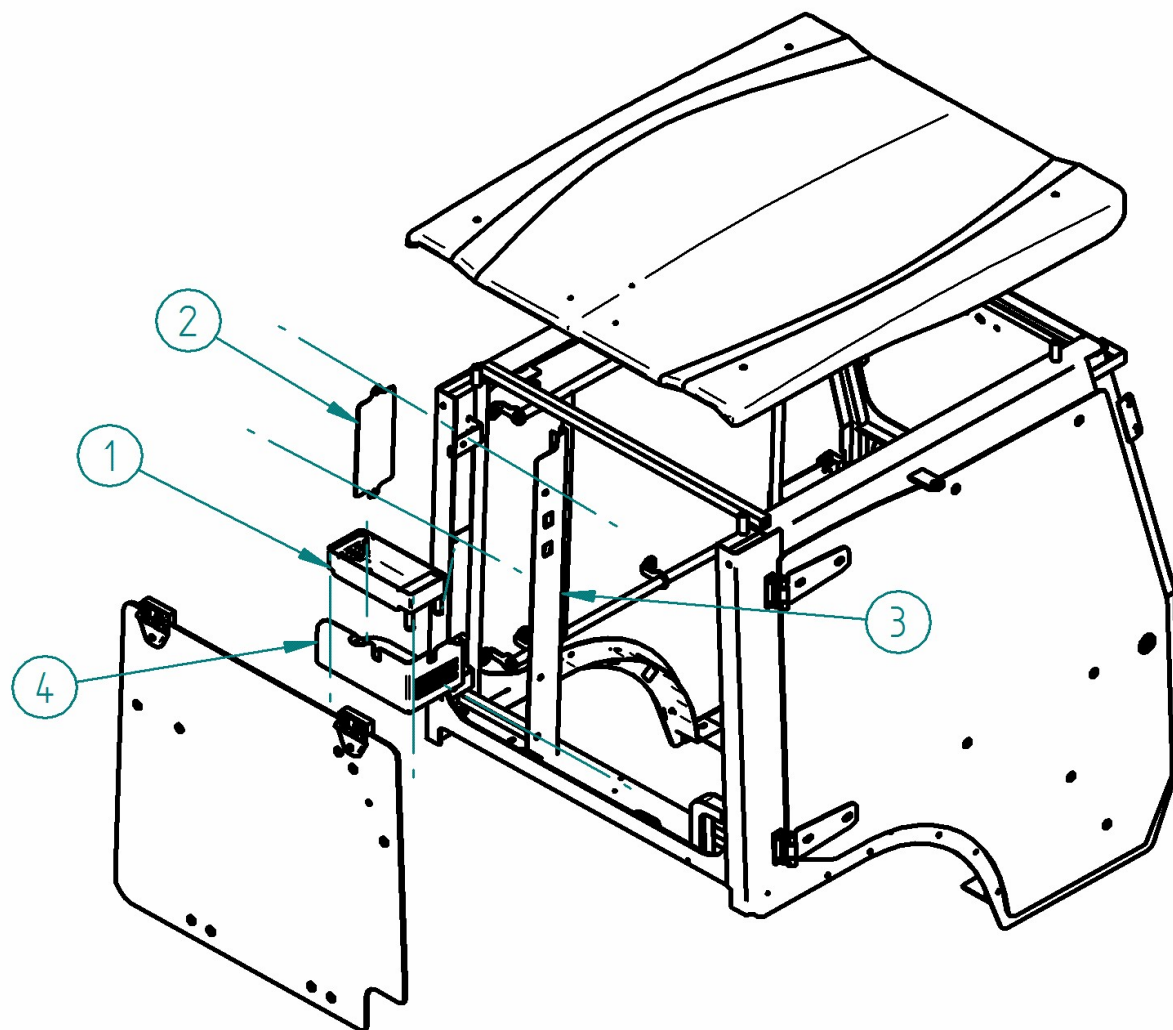
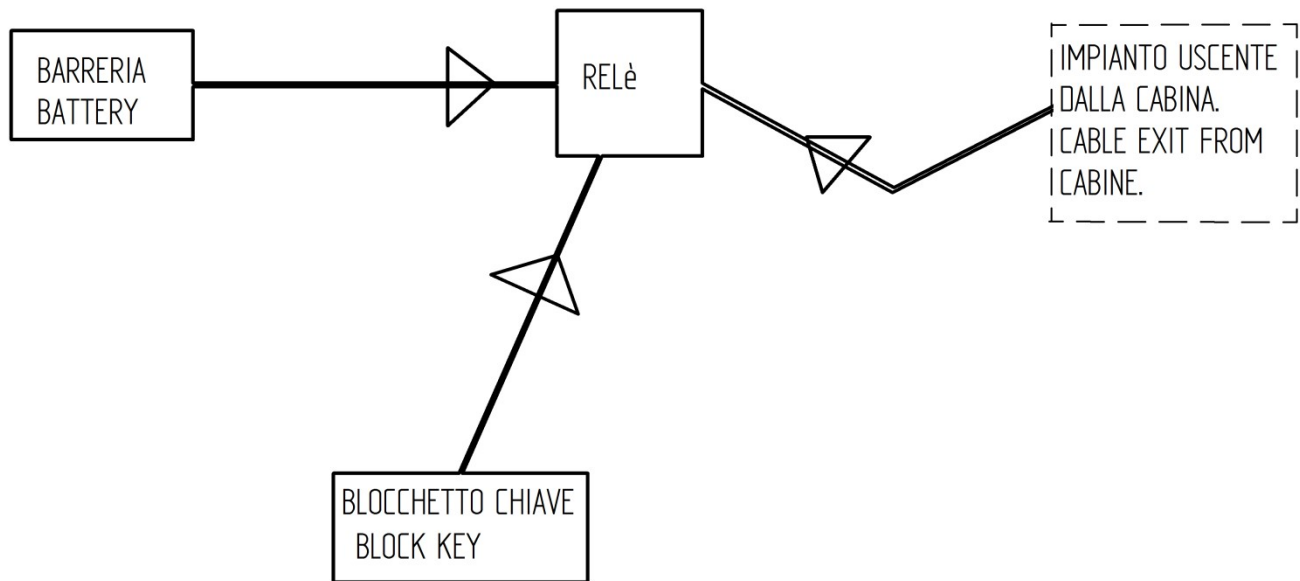


Image indicative.

The company AGRITAL for product improvement by increasing the comfort of living in the cabin has decided to further reduce the space of the heating unit, however, maintaining the quality characteristics.
LIST IN THE NEW MEMBERS:

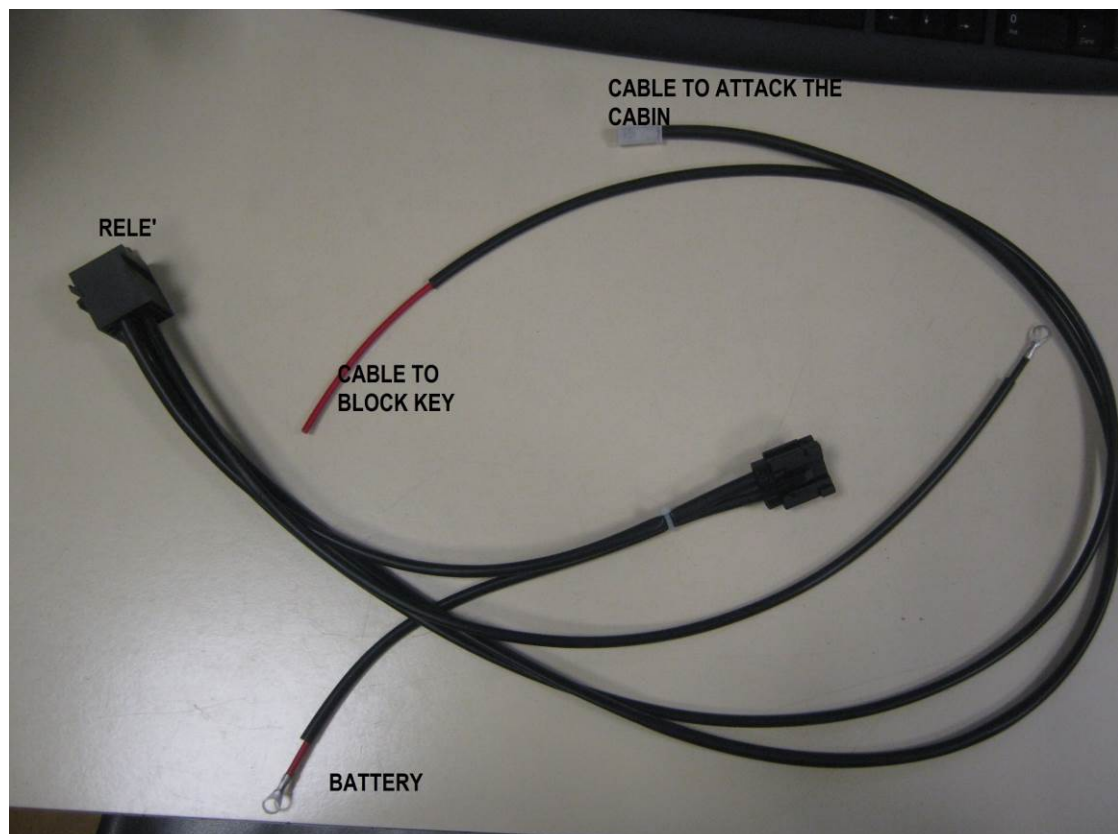
1	1	Compact unit HEATING	XX0283470000
2	1	Closure compartment filter (no filter)	6061055500
3	1	Carter closed for passage in the riser pipe	6066525500
4	1	Carter closing for group hung on the attic	6151042500

ELECTRICAL CONNECTION



FOR CONNECT THE LIGHTS, AND OTHER ACCESSORIES ARROWS FOR STOPPING WITH THE CAR YOU CAN CONNECT AS FOLLOWS:

We remain at your disposal for any clarification



AGRITAL s.r.l.
Via Leonardo Da Vinci, 20
Arzago d'Adda (BG)
-ITALIA-
tel. 0363.87633
fax. 0363.87355
www.agritale.com

E-Mail : agritale@agritale.com