



*ASSEMBLY DIAGRAM
AND SPARE PARTS*

CABIN APPROVED

JOHN DEERE
1026R

OWNER'S MANUAL **MAINTENANCE**

Thanking you for your purchase , we list some short, simple maintenance to maintain efficient and in good condition your cabin .

CARE and CLEANING

To clean the inside it is recommended to take apart and clean the carpets furniture not soak in water. The covers are washable with water fixed . +

RECORDING DOORS

After assembly of the cabin on the tractor may be necessary to adjust the closing of the doors by adjusting the fastening of the lock. This operation is repeated every time it is disassembled and reassembled the cabin.

To maintain an effective closure of the goalkeeper we strongly advise you to work with the doors open because the prolonged vibration may affect the hinges .

HEATING SYSTEM \ FAN (tractors , water-cooled)

Please note that to switch from heating to ventilation is necessary to close the tap hot water output that is located in the cabin

CLEANING AND REPLACEMENT FILTERS

We recommend that you blow the air intake filter every 150 hours of operation of the tractor.

Instead every 1000 working hours should clean the system always fully using compressed air. To gain access to the system must remove the plastic roof or sheet after removal of the silicone . In replacement of the roof we recommend running again sealing with the use of silicone.

And ' advisable to change the filter 1 time per year.

For the activated carbon filters have a limited life so if they use only advice during treatments and to replace it with a normal filter for other jobs. The active carbon filter must be kept in the outer carton .

The filter life depends very much on working condition, however, the average duration is 150 hours of work.

AIR CONDITIONING SYSTEM

Recall that for a proper functioning is essential to keep the radiator clean place on the roof and the position of the gas in the compressor.

To clean the radiator using compressed air max. 3.5 bar to avoid damaging the radiating body .

To charge the compressor does not exceed the specified weight (0.7 kg for large compressors and 0.5 kg for small compressors) to not send the system overpressure .

For more details refer to the manual of the specific manufacturer.

For any further information our staff and our technicians are at your disposal

AGRITAL S.r.l.

Via Leonardo Da Vinci, 20

24040 Arzago d'Adda

(BERGAMO) - ITALY

TEL : +39-0363-87633

FAX : +39-0363-87355

E-Mail: agrital@agrital.com

WEB site: <http://www.agrital.com>

**AGRITAL**
SRL**WARRANTY REGISTRATION**

Dear customer,

The warranty is valid only if it is completely filled and sent within 15 days from the date of purchase to Agrital srl. The warranty can be sent by fax or by e-mail.

Model of the cab or tractor : _____

Cab Serial Number : _____

Date of Purchase : _____

Company dealer : _____

The guarantee is valid for 12 months only valid on the details defective in factory , is not recognized by the user for damaged parts or normal wear and tear .

For the air conditioning system also fill out the warranty of the manufacturer of the system .

The customer also declares having received the instructions for use and maintenance, have been informed properly by the dealer on the proper use of the cabin , its installations . For use of any PPE for use of the car to follow the instructions and directions of your doctor 's work.

The dealer confirms that you have installed , or have been installed , the cabin in compliance with all instructions provided by the manufacturer in order that the approval OECD- SAE is valid.

Stamp of authorized dealer :

Place and date : _____

Name or

company name : _____

(please print)

Signature

PROCEDURE FOR THE INSTALLATION OF THE PRODUCT.

Remove the following parts from the tractor:

- Roll-back bar, easel door lights / arrows pulling the electrical system (Fig. 2) and the power plug from the rool bar, brackets sostegono fenders and side tank (which can then be mounted on the rear bench), seat unscrew 4 screws on the top platform (Fig. 3)



Fig. 1



Fig. 2

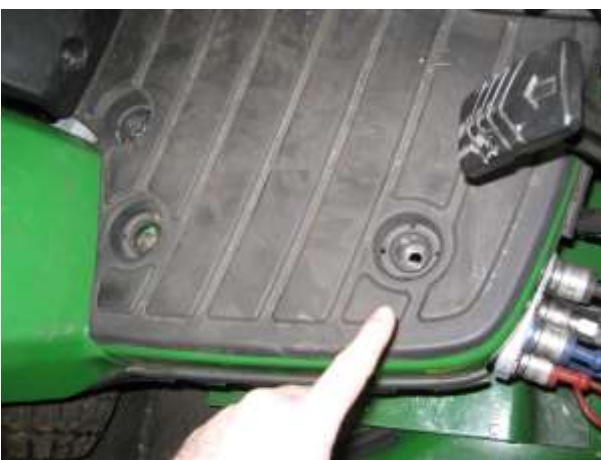


Fig. 3 (DX –SX)

In the same position in which he had fixed the Roll-bar mount the rear bench with the original screws (Fig. 4), replace the brackets that hold the fenders and side tank and attach them to the bench with the original screws (Fig. 5).



Fig. 4



Fig. 5

Lower the cab on the tractor (fig. 6) taking care to avoid spikes on the pedals, once positioned to secure Silent-block bench (Fig. 7) with the supplied screws (No. 2 M12x80).



Fig. 6



Fig. 7

Once attached the cab to the bench proceed to fix the platforms of the cab to the floor of the tractor (Fig. 8) with the supplied screws (No. 2 M10x60), mount the front brackets (right and left are different) with the screws provided with the facilities of the tractor and the cab (bracket SX fig. 9-10; bracket DX fig. 11-12).



Fig. 9



Fig. 8



Fig. 10



Fig. 11



Fig.12

Insert the locking plates that already have the gasket mounted clamp (see photo):

- An external sheet front (removable for maintenance engine compartment) - fig. 13
- An internal sheet metal behind the rear seat - fig. 14
- Two metal pegs at the bottom (a DX and SX) Fig. 15 -16
- A plate for the pedal SX and a rubber closure for DX pedals. (fig. 17-18)
- Closing with adhesive sponge above the rear fenders. (fig. 19)

Apply silicone to the cracks.



Fig. 13



Fig. 14

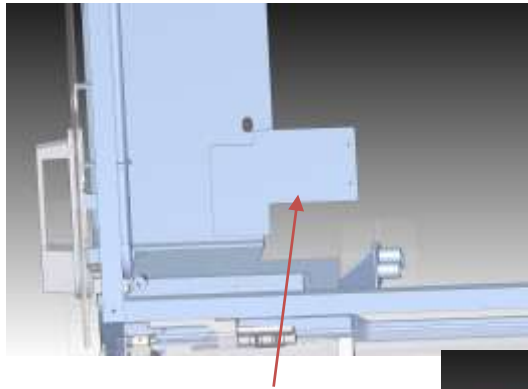


Fig. 15

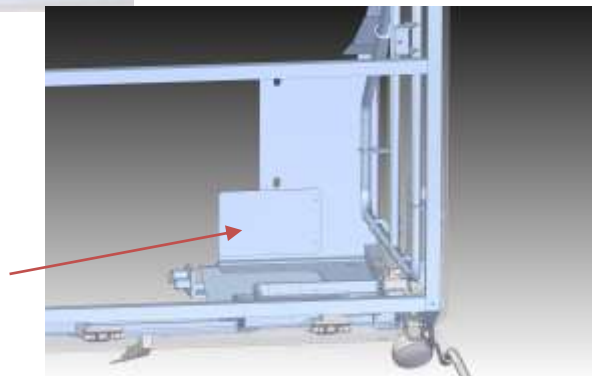


Fig. 16



Fig. 17



Fig.18



Fig. 19

HEATING (optional)

For cabins with heating:

Connect the hose to "flow" using the link provided (fig. 20). Also connect the hose to 'return' directly to 'attack', by removing the cap present.



Fig. 20

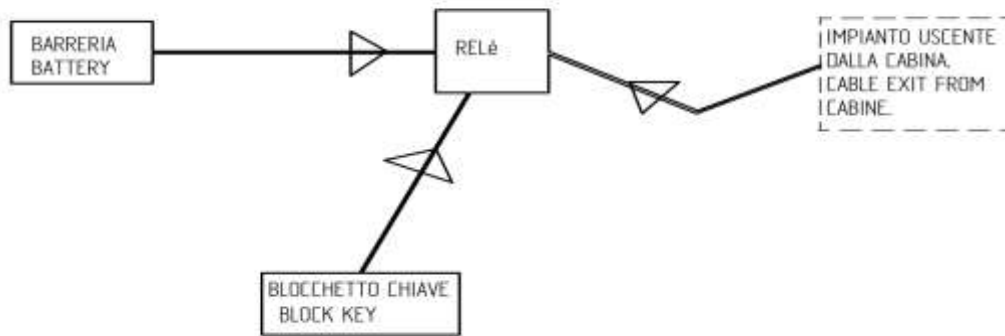


Fig. 21

At the end of it all start the engine and let it warm up (minimum 5 min.). Once in the temperature off and wait at least 10 min. it cools down. At this point do refilling of water in the radiator.

ELECTRICAL CONNECTION under the bonnet::

To turn off the electrical system of the car with the SAME machine you need to connect:
Let's have included everything you



need.



Remove the original headlight from the tractor and mount them on the front of the cabin where they are already fixed the brackets, connect them electrically.

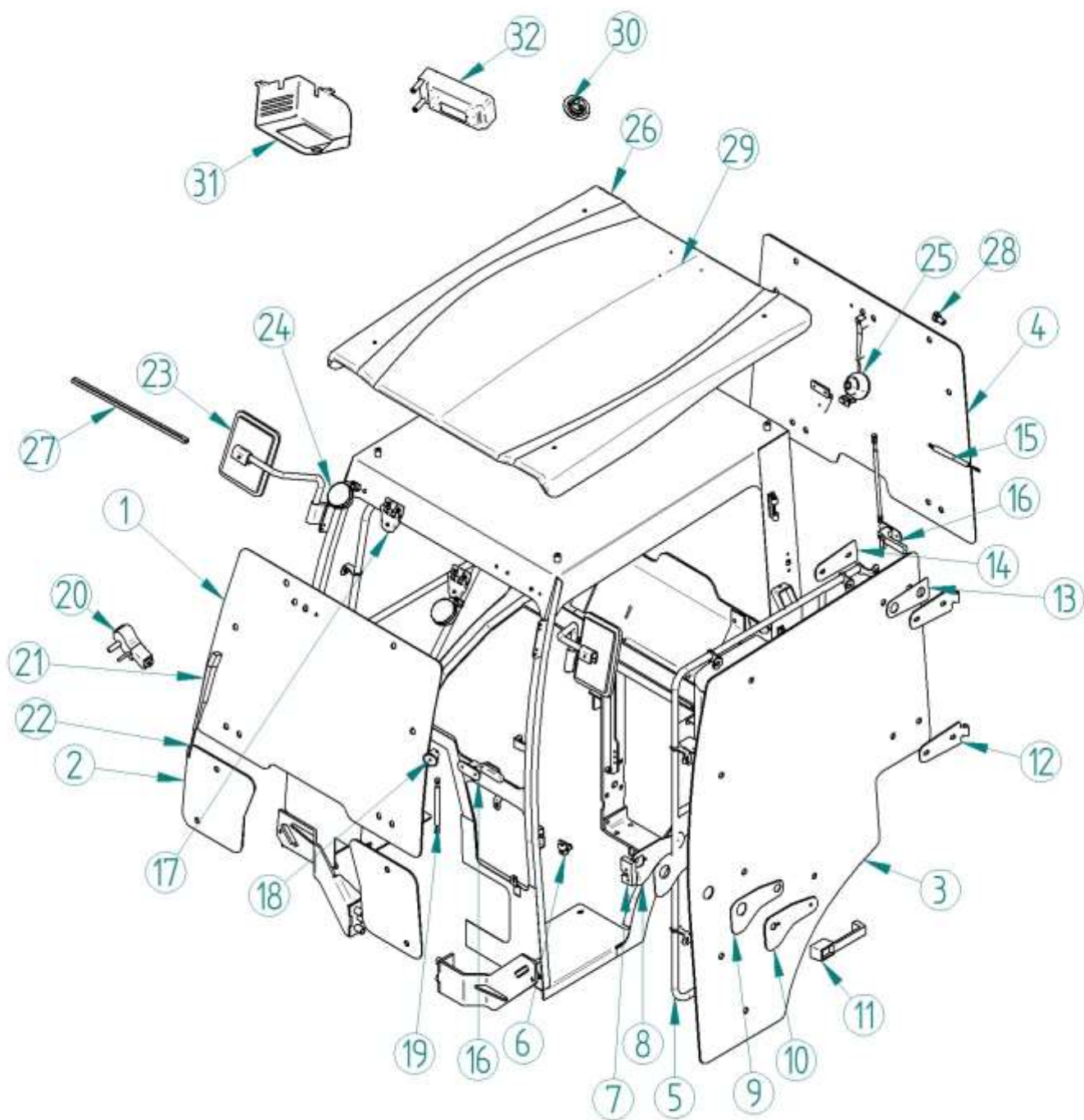


N.B.: THE BULKHEAD MUST BE FIXED WHEN TRACTOR MOVES.

We remain at your disposal for any clarification.

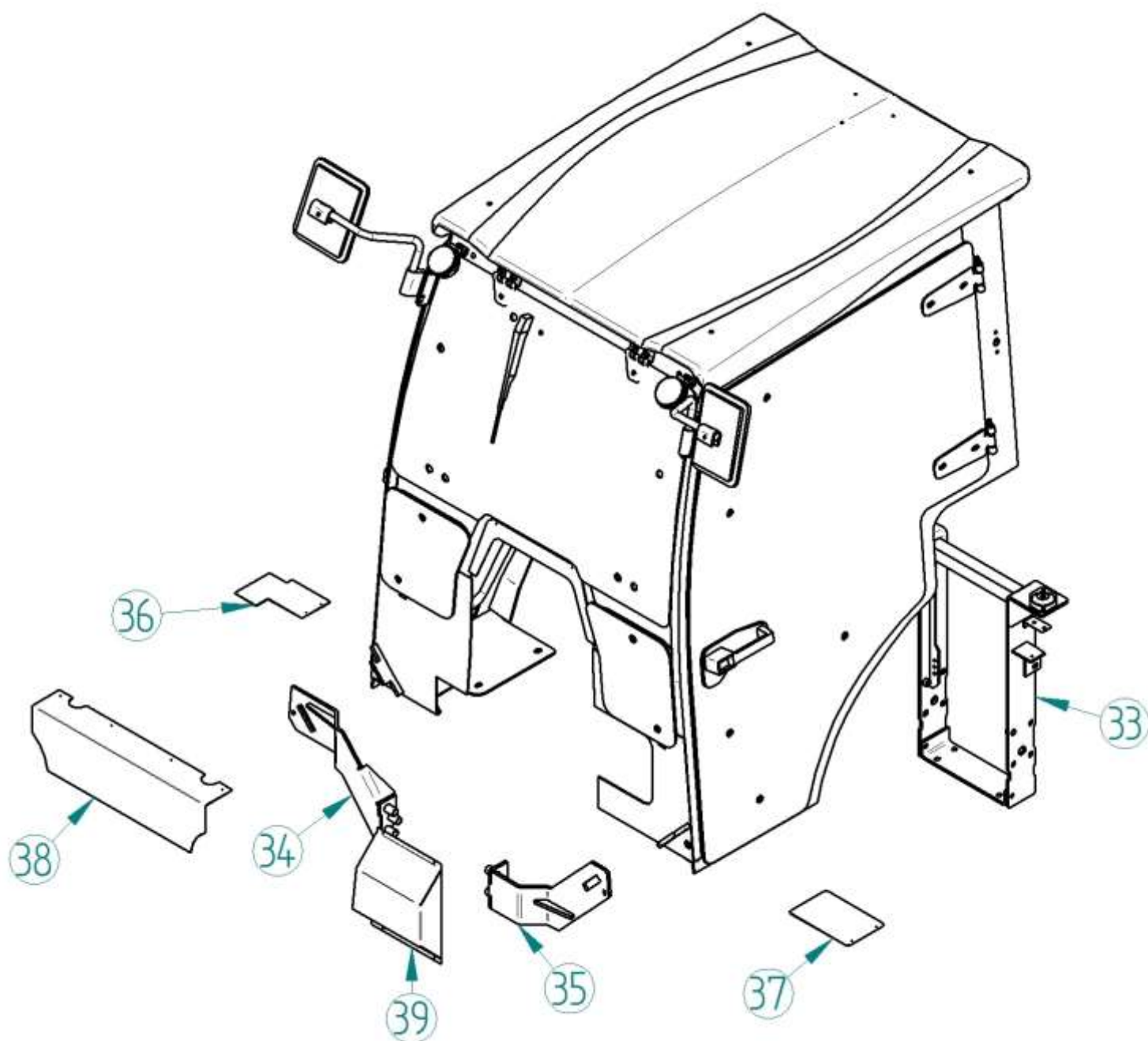
Sincerely, Agrital srl.

AND SPARE PARTS LIST FOR
DIAGRAM COMPONENTS FRONT AND SIDES:



REAR WIRING COMPONENTS ACCESSORIES:				
N°	QT	DESCRIPTION	CODE	
1	1	Crystal Front opening	6752011000	
2	1	Crystal portholes lower fixed front	6752049000	
3	2	Crystal door	6752030000 SX 6752031000 DX	
4	1	Crystal Rear opening	6752040000	
5	1+1	Handle door DX / bal. SX	6751069500	6751067500
6	2	strike box	295190070	
7	1+1	Lock DX / SX symmetrical	290290624	290290614
8	1+1	Plate coupling lock DX / bal. SX	1771060500	1771059500
9	4	Seal plate coupling lock	1771065000	
10	2	Plate attachment handle	1771058500	
11	2	Handle Push Pull	290290544	
12	4	door hinge	6061067500	
13	4	Gasket door hinge	6061078000	
14	4	Plate coupling internal handle	6061017500	
15	2	Shock door I.315	296190110	
16	1+1	Crystal handle front DX / SX symmetrical	290290144	290290114
17	2	Nylon zipper flap doors	299190094	
18	2	Swivel complete shock x	294190014	
19	2	Shock Crystal front I.255	296190110	
20	1	wiper motor	292190790	
21	1	rod wiper	292190430	
22	1	wiper Blade	292190070	
23	1	Rearview Mirror DX (OPTIONAL) / SX symmetrical	290290204	290290184
24	2	Front work lights	ORIGINAL TRACTOR	
25	2	Rear work light (OPTIONAL)		
26	1	ABS roof	6061050310	
27	MT	seal crystals	210060	
28	1	Socket for flashing	282190210	
29	1	bracket for flashing	1941080510	
30	1	interior courtesy light	282190254	
31	1	box for heating (OPTIONAL)	6151042500	
32	1	Heating (OPTIONAL)	283470000	

DIAGRAM COMPONENTS ACCESSORIES:



LIST OF ACCESSORIES			
N°	QT	DESCRIPTION	CODE
33	1	back bench	6751060500
34	1	Hook bracket front DX	6751052500
35	1	Hook bracket front SX	6751053500
36	1	Closing internal platform DX	6751062500
37	1	Closing internal platform SX	6751061500
38	1	Closing the inner rear	6751056500
39	1	Closing external pedal SX	6751059500

AGRITAL s.r.l.

Via L. Da Vinci, 20
24050 Arzago d'Adda (BG)

-ITALY-

Tel. +039 . 0363.87633

fax. +39 .0363. 87355

www.agritale.com

e-mail = agritale@agritale.com