



INSTALLATION GUIDE

&

SPARE PARTS CATALOGUE

Solaris N

Modèles :

SAME = Solaris 30/40/50

Lamborghini= R1 30/40/50

Hurlimann = Prince 30/40/50

Deuz- Fahr = Agrokid 30/4/50

Massey Ferguson = 2405 /2410 /2415

AGRITAL S.r.l.

Via Leonardo Da Vinci, 20

24040 Arzago d'Adda

(BERGAMO) - ITALY

TEL : +39-0363-87633

FAX : +39-0363-87355

E-Mail: agrital@agrital.com

WEB site: <http://www.agrital.com>

WARRANTY REGISTRATION

Dear costumer,

The warranty is valid only if you fill the form and sent it back to Agrital within 15 days from the date of purchase. The form may be sent by e-mail or by fax.

Model of cab or tractor:

Cab serial number:

Date of purchase:

Dealer's name:

The warranty is valid for 12 months for defective parts, Agrital doesn't recognize the warranty for breakage caused by improper use, normal wear or damage from the user.

For air conditioning system, please fill also the manufacturer's warranty

The customer confirm to have received the owner's manual and the maintenance manual. He has been properly informed by the dealer on the correct use of the cabin. For the use of any personal protective equipment the user must follow the directions of his person in charge for the safety at work.

The dealer confirms that he has installed the cab in according to instruction provided by the manufacturer, in order that the SAE-OECD approval is valid.

Stamp dealer:

Date and place:

Name, Surname or
Company's name:
(block letters)

Signature:



MAINTENANCE GUIDE

Dear Customer,

We thank you for choosing an Agrital cab!

Here's a reference guide for the most common maintenance operation you'll be performing to maintain your new cab efficient and in good state.

CLEANING

To clean the interior, we suggest to remove the carpets and clean them separately, in order not to leave them wet. The fixed linings can be cleaned with simple water.

DOOR ADJUSTMENT

After having installed your new cab, you may need to adjust the door locking by adjusting the attachment of the door latch. This operation must be carried on each time the cab is mounted.

To maintain a good efficiency of the locks, we strongly suggest not to operate the tractor with the doors open, since the vibrations could damage the hinges.

HEATING/VENTILATION SYSTEM (water-cooled tractors only)

In order to switch from the heating to the simple ventilation, the operator has to turn off the hydraulic outlet tap inside the cab.

CLEANING AND CHANGING THE AIR FILTERS

We suggest to clean the intake air filter every 150 working hours with compressed air or a vacuum cleaner. After 1000 working hours, we suggest to completely clean the air system by using compressed air. To access the system remove the roof (the silicone will have to be removed as well). We suggest to put new silicone back when mounting the roof again.

We suggest to change the air filter once a year.

Carbon activated filters have a very limited life span. We suggest to use them only when dealing with special chemical treatments and to use a standard filter for other operations.

Store the activated carbon filter in its package when not in use.

The life span of the filter depends on the working conditions. The mean life span is about 150 working hours.

AIR CONDITIONING SYSTEM

To keep the air conditioning effective, please remember to clean the radiator on the roof and keep the gas on the compressor at level.

To clean the radiator use compressed air. Keep a maximum of 3.5 bar in order not to damage the radiator.

To refill the compressor, do not exceed 0.7 Kg. for big compressors and 0.5 for small compressors and do not put the system under excessive pressure.

For further instructions please refer to the instruction manual of the air conditioning system.

Please do not hesitate to contact us for any question!

AGRITAL S.r.l.

Remove from tractor: roll bar front and rear (remove from the roll-bar front the lights position / arrows); shin-guard front and plastic obblò, position arrows / rear turn signals, support handles in plastic placed on the fenders.

Finish with the closing to the holes left fender with screws and washers.

DO NOT TIGHTEN THE SCREWS UNTIL OTHERWISE SPECIFIED

Mount the rear bracket "1" complete with silent-block over the roll bar front support and fix with screws n°8 M12 (4 for bracket).

Mount the front bracket "1" complete with silent-block over the roll bar rear support and fixed as shown.

Revise the existing top hole on the roll bar so that it becomes through, then secure with the original screws removed previously.

For machines with pneumatic 20 (40CV- 30CV) and the frame must be rotated 180 degrees with respect to the plan. (the bent part of the bracket mounted with the silent-block must be directed toward the inside of the machine.)

Raise the cab '3 'with the correct rings and paste the supplied adhesive seal 30x20 under the rear cross tube and the side tube (bends) under. (between mudguard and cabine).

NB: for cabins mounted on tractors 40CV the gasket must be bonded only in the rear. For 30CV and 40CV cabins of tractors with pneumatic 20:

Attach the strip of sheet '9 'on the rear fender using the two the external slots, with M6 screws, paste adhesive gasket 40x40. (the part of the strip of sheet metal with the fixing slots remains towards the interior of the cabin. The seal must be pasted from the opposite side).

Lower the cabin on the tractor centering optimally doing support the fixing brackets of the cab on the front brackets silent.blok '1 'and the rear frame '2', fixing it with the supplied screws M12 (put the washer wider at the bottom of the silent-blok).

Check the optimum closing of the cabin on the fenders and cab fissafe the platforms to the platforms with machine screws M10x30. Drill holes in the platforms of the machine by copying the existing holes on the platforms of the cabin.

30CV ONLY AND MACHINES WITH TYRES 20.

Place the plastic closures "9" on the platforms of the tractor so that they close the space between the cab and the fender; fasten with self-drilling screws.

Tighten the screws starting with those that attach the brackets to the tractor and the frame and then the cab to the brackets.

Install the lower fasteners '4 'between the platforms, the dashboard and cabin fixing them with M5 screws, plastic washers, lock washers and nuts iron.

Push the closure on the dashboard '5 'position (seal onto bulb law provided) on the front of the cabin so that it makes a perfect closure on the instrument panel and fasten with self-drilling screws.

Paste the adhesive gasket on angle closure '6 'in aluminum and secure it to the rear cross tube in the cabin (inside) so as to close the holes existing on the cross platform trattore. Non necessary on 30CV

Do not perform this operation on machines 30CV and 40CV with pneumatic 20

Fit the gasket profile on the sheets metal of side closure '7 ', place them outside the tubes radiused side of the cabin in order to obtain an optimal closing on the fenders and fasten with self-drilling screws.

ONLY FOR MACHINES AND 40CV 30CV. On sheet of side locking you must fit the seal bulb right.

Lay the carpet on the wings staking them with the angle brackets in aluminum: angolari to fix the sheet metal of the door aperture with self-drilling screws.

Replace the tail lights on the front of the cab front brackets.

Replace the tail lights on the rear of the cab into place.

Attach the muffler to the floor of the tractor using the bracket supplied 8: Attach the muffler using the original screw securing the handle to the platform and screw M8x20 supplied. Drill holes in the work platform.

Connect the electrical system of the car to the starter motor.

BOOTH WITH HEATING SYSTEM.

Connect the hoses coming out of the cab as schemino attachment.

Cut the thick rubber sleeve on the front of the engine to insert the sleeve of iron supplied for the return.

Cut the short rubber tube heat exchanger area (RH side of the engine near the dashboard) for the delivery.

The discharge pipe is coming out of the right-hand pillar of the cab and marked with tape

Attach the hoses and tubes with the metal clamp provided. Secure the hoses along the way so they do not touch parts of the engine that can heat up excessively. _ The heating pipes must be protected by the plastic tube provided (for the exposed between the cab and engine compartment).

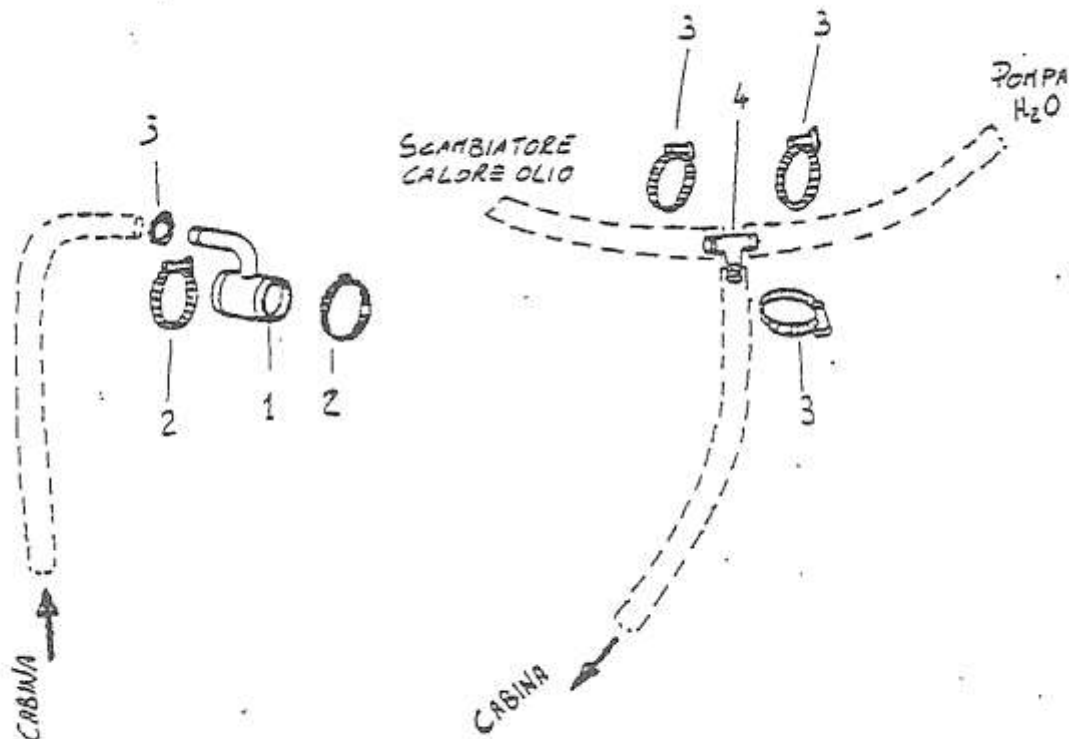
CABINE SAME SOLARIS 30/40/50

LAMBORGHINI R1 30/40/50

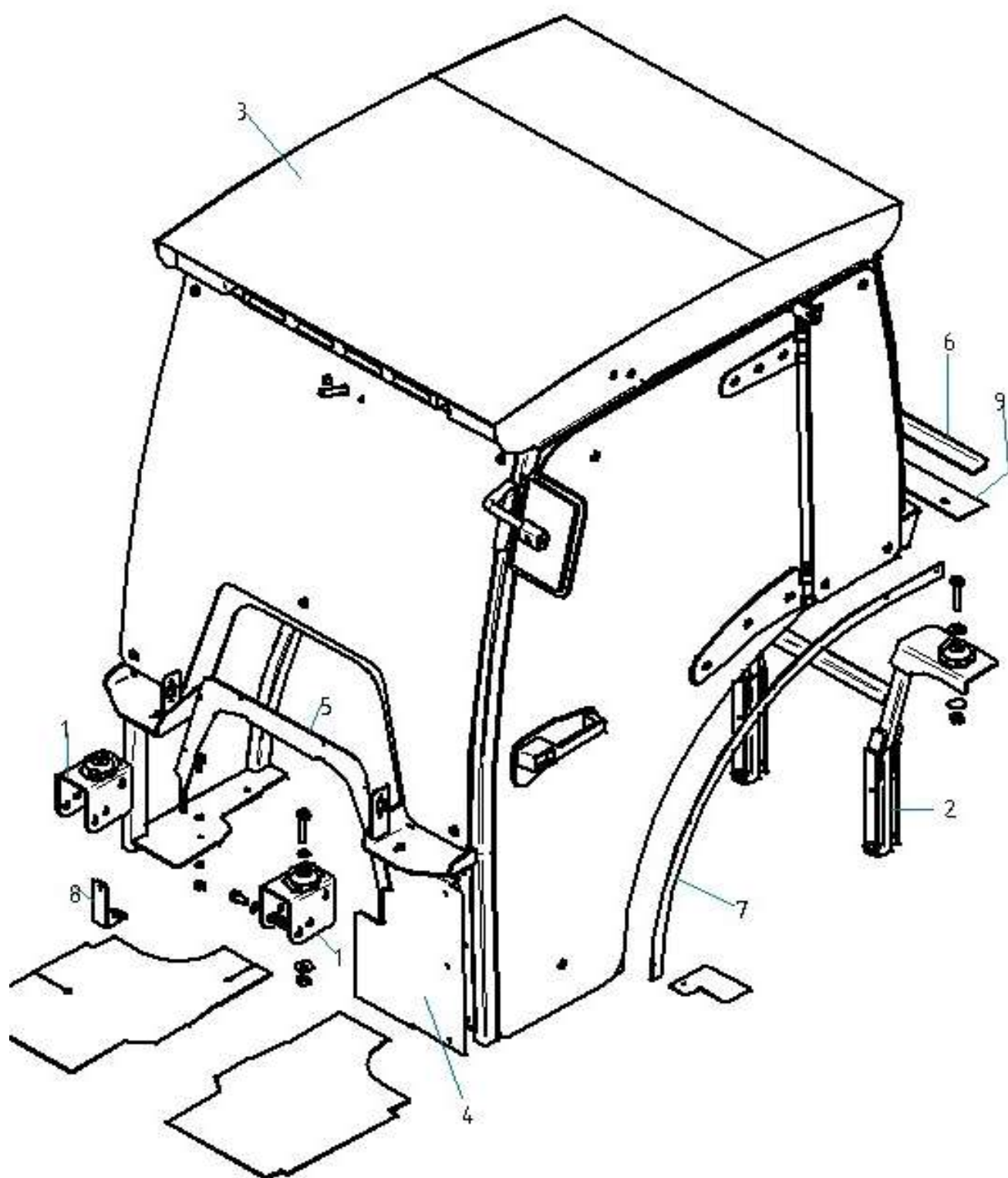
HURLIMANN PRINCE 30/40/50

DEUTZ/FAHR AGROKID 30/40/50

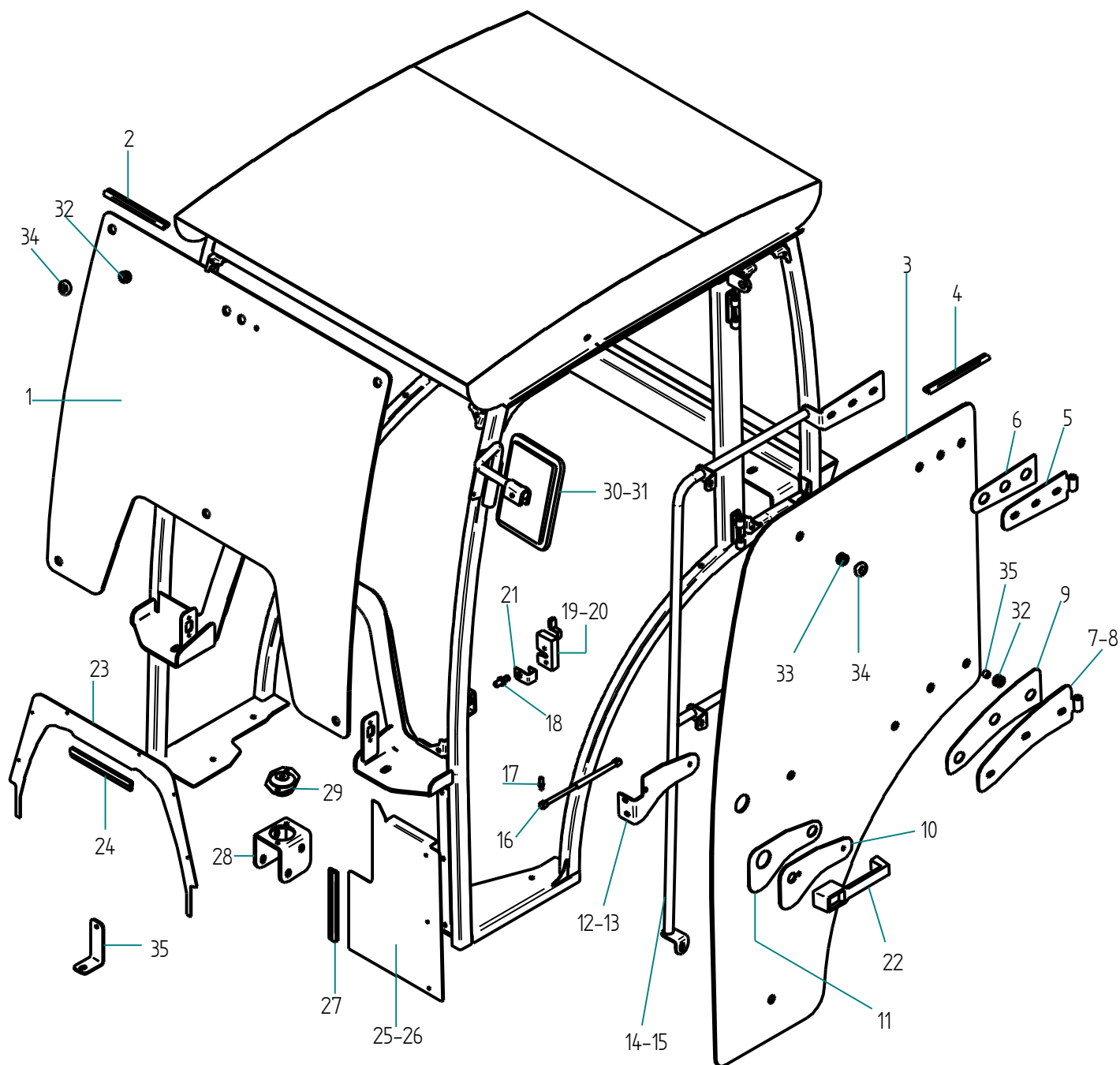
M.F. 2405/2410/2415



**Assembling scheme for cabin fitting on
Same Solaris 30/40/50 – Lamb.R1 30/40/50 – Hurlimann Prince 30/40/50
Deutz-Fahr Agrokid 30/40/50 – MF 2415/2410/2405**

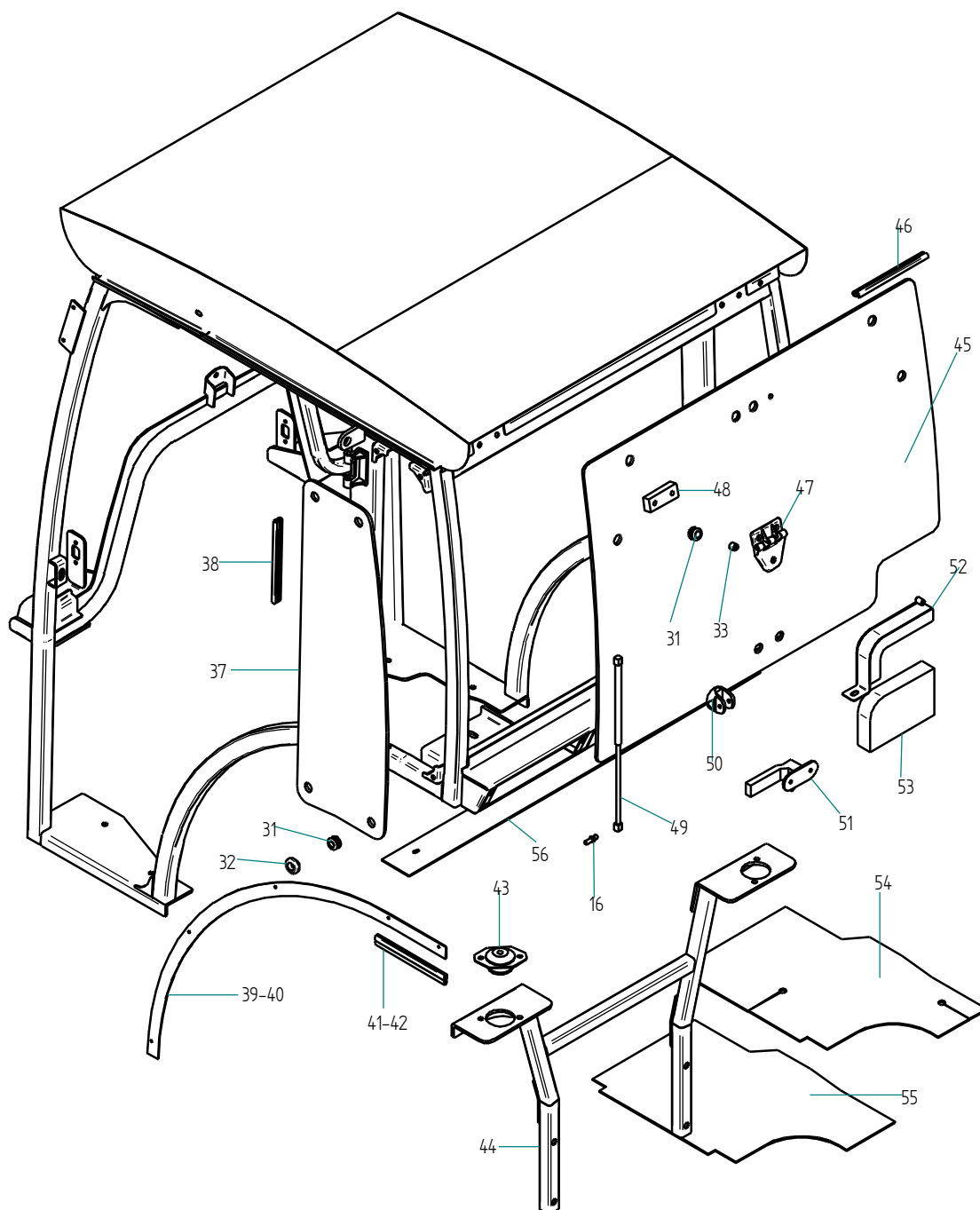


SPARE PARTS



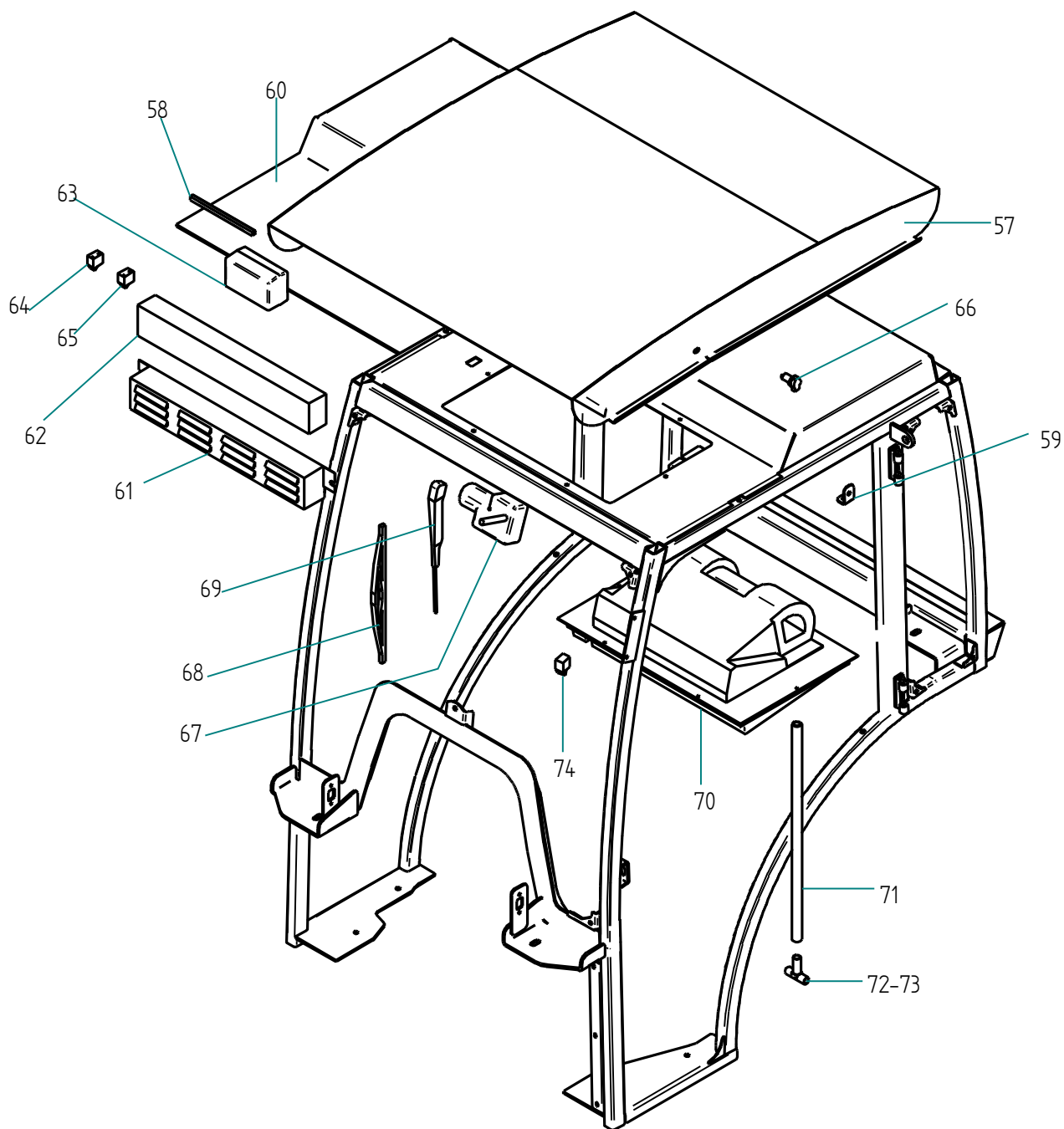
n.	Descrizione	Codice	q.tà x cab
1	Cristallo parabrezza	177.2010.000	n. 1
2	Guarnizione cristallo Parabrezza	210.060	ml. 3,65
3	Cristallo porta Dx - Sx	177.2030.000	n. 1 + 1
4	Guarnizione Cristallo Porta	210.060	ml 4,30+4,30
5	Cerniera superiore porta	177.1053.500	n. 2
6	Guarniz. Cerniera sup. (int./est.)	177.1063.000	n. 4
7	Cerniera inferiore Sx	177.1054.500	n. 1
8	Cerniera inferioe Dx	177.1055.500	n. 1
9	Guarniz. Cerniera inf.(int./est.)	177.1064.000	n. 4
10	Piastra Maniglia	177.1058.500	n. 2
11	Guarniz. piastra maniglia(int./est.)	177.1065.000	n. 4
12	Supporto serratura Sx	177.1059.500	n. 1
13	Supporto serratura Dx	177.1060.500	n. 1
14	Maniglione porta Sx	177.1056.500	n. 1
15	Maniglione porta Dx	177.1057.500	n. 1
16	Molla a gas porta dx e sx	2.9619019.0	n. 1 + 1
17	Snodo x molla a gas porta e post.	2.9719001.2	n. 6
18	Riscontro serratura	2.9519006.0	n. 2

n.	Descrizione	Codice	q.tà x cab
19	Serratura porta Sx	2.9029062.4	n. 1
20	Serratura porta Dx	2.9029061.4	n. 1
21	Protezione riscontro	740.1056.500	n. 2
22	Maniglia Porta dx/sx	2.9029054.4	n. 1 + 1
23	Chiusura Cruscotto	177.1068.500	n. 1
24	Guarniz.Chiusura cruscotto	210.040	ml. 1,50
25	Chiusura anteriore Sx	177.1069.500	n. 1
26	Chiusura anteriore Dx	177.1070.500	n. 1
27	Guarniz.x chiusura dx/sx	210040	ml.0,30+0,30
28	Staffa anteriore	177.1051.500	n. 2
29	Silent-block anteriore	2.6570001.4	n. 2
30	Specchio Retrovisore Sx	2.9319018.4	n. 1
31	Specchio Retrovisore Dx	2.9319020.4	n. 1
32	Gommino per fori cristallo	2.6569001.0	Totale n. 38
33	Supp.nylon gommmini crist.	2.9119007.0	Totale n. 21
34	Distanz. Gomm.fori crist.	2.50190012	Totale n. 18
35	Squadretta marmitta	177.1071.500	n. 1



n.	Descrizione	Codice	q.tà x cab
37	Cristallo finestrino Dx e Sx	177.2020.000	n. 1 + 1
38	Guarniz. Cristallo finestrino	210.060	ml. 1,5 + 1,5
39	Chiusura Laterale (40/50 cv)	177.1067.500	n. 2
40	Chiusura Laterale (30 cv)	177.1072.500	n. 2
41	Guarniz. Chius. Lat. (50cv)	210.080	ml. 2,20
42	Guarniz. Chius. Lat. (30-40cv)	210.040	ml. 2,20
43	Silent-block posteriore	2.65700024	n. 2
44	Telaio Post.	177.1052.500	n. 1
45	Cristallo Posteriore	177.2040.000	n. 1
46	Guarnizione Cristallo Posteriore	210.060	ml. 3,50
47	Cerniera compl. cristallo Post.	2.9919009.4	n. 2
48	Spessore x cerniera crist. Post.	423.1057.000	n. 2

n.	Descrizione	Codice	q.tà x cab
49	Molla a gas crist. Post.	2.9619018.0	n. 2
50	Supp.Ammort. Post.	2.9419001.4	n. 2
51	Maniglia chius. crist. Post.	2.9029014.4	n. 1
52	Sportello Posteriore	177.1062.500	n. 1
53	Spugnotto per sportello	177.1066.000	n. 1
54	Tappeto Dx 50cv	177.4043.000	n. 1
54	Tappeto Dx 40cv	177.4045.000	n. 1
54	Tappetp Dx 30cv	177.4047.000	n. 1
55	Tappeto Sx 50cv	177.4044.000	n. 1
55	Tappeto Sx 40cv	177.4046.000	n. 1
55	Tappeto Sx 30cv	177.4048.000	n. 1
56	Supporto chiusura (solo 30cv)	177.7074.500	n. 1



n.	Descrizione	Codice	q.tà x cab
57	Tetto	177.1050.500	n. 1
58	Profilo tetto	210.080	ml. 2
59	Squadretta fiss. Tetto	177.1061.500	n. 2
60	Sottotetto	177.4050.000	n. 1
61	Portafiltro (solo x cabine con riscaldamento)	164.5053.500	n. 1
61	Chiusura Ant. tetto (per cabine senza riscaldamento)	164.1097.000	n. 1
62	Filtro aria (carta)	2.8519004.0	n. 1
62	Filtro aria (carbone attivo)	2.8519006.0	n. 1
64	Interruttore Tergicristallo (cabina senza riscaldamento)	2.8119014.0	n. 1
64	Interruttore Tergicristallo (cabina con riscaldamento)	2.8119007.0	n. 1
65	Interruttore fari lavoro (cabina senza riscaldamento)	2.8119015.0	n. 1

n.	Descrizione	Codice	q.tà x cab
65	Interruttore fari lavoro (cabina con riscaldamento)	2.8119008.0	n. 1
66	Presa per Lampeggiante	2.8219021.0	n. 1
67	Motorino tergicr. (Ant. e post.)	2.9219053.4	n. 1 + 1
68	Spazzola tergicristallo (Ant. e Post.)	2.9219007.0	n. 1 + 1
69	Asta tergicristallo (Ant. e Post.)	2.9219.43.0	n. 1 + 1
70	Gruppo Riscaldamento	146.6040.4	n. 1
71	Tubo per riscaldamento	210.100	ml. 9
72	Raccordo mandata riscaldamento	163.6053.200	n. 1
73	Raccordo ritorno riscaldamento	163.6053.300	n. 1
74	Interruttore ventilazione / riscaldamento	2.8119006.0	n. 1

AGRITAL s.r.l.

Via L. Da Vinci, 20
24050 Arzago d'Adda (BG)

-ITALY-

Tel. +039 . 0363.87633

fax. +39 .0363. 87355

www.agritale.com

e-mail = agritale@agritale.com