

INSTALLATION GUIDE

&

SPARE PARTS CATALOGUE

TREKKER 2001

Cod. AG333

Modelli :
LANDINI TREKKER 2001

AGRITAL S.r.l.

Via Leonardo Da Vinci, 20

24040 Arzago d'Adda

(BERGAMO) - ITALY

TEL : +39-0363-87633

FAX : +39-0363-87355

E-Mail: agrital@agrital.com

WEB site: <http://www.agrital.com>



WARRANTY REGISTRATION

Dear costumer,

The warranty is valid only if you fill the form and sent it back to Agrital within 15 days from the date of purchase. The form may be sent by e-mail or by fax.

Model of cab or tractor:

Cab serial number:

Date of purchase:

Dealer's name:

The warranty is valid for 12 months for defective parts, Agrital doesn't recognize the warranty for breakage caused by improper use, normal wear or damage from the user.

For air conditioning system, please fill also the manufacturer's warranty

The customer confirm to have received the owner's manual and the maintenance manual. He has been properly informed by the dealer on the correct use of the cabin. For the use of any personal protective equipment the user must follow the directions of his person in charge for the safety at work.

The dealer confirms that he has installed the cab in according to instruction provided by the manufacturer, in order that the SAE-OECD approval is valid.

Stamp dealer:

Date and place:

Name, Surname or
Company's name:
(block letters)

Signature:



MAINTENANCE GUIDE

Dear Customer,

We thank you for choosing an Agrital cab!

Here's a reference guide for the most common maintenance operation you'll be performing to maintain your new cab efficient and in good state.

CLEANING

To clean the interior, we suggest to remove the carpets and clean the separately, in order not to leave them wet. The fixed linings can be cleaned with simple water.

DOOR ADJUSTMENT

After having installed your new cab, you may need to adjust the door locking by adjusting the attachment of the door latch. This operation must be carried on each time the cab is mounted.

To maintain a good efficiency of the locks, we strongly suggest not to operate the tractor with the doors open, since the vibrations could damage the hinges.

HEATING/VENTILATION SYSTEM (water-cooled tractors only)

In order to switch from the heating to the simple ventilation, the operator has to turn off the hydraulic outlet tap inside the cab.

CLEANING AND CHANGING THE AIR FILTERS

We suggest to clean the intake air filter every 150 working hours with compressed air or a vacuum cleaner.

After 1000 working hours, we suggest to completely clean the air system by using compressed air. To access the system remove the roof (the silicone will have to be removed as well). We suggest to put new silicone back when mounting the roof again.

We suggest to change the air filter once a year.

Carbon activated filters have a very limited life span. We suggest to use them only when dealing with special chemical treatments and to use a standard filter for other operations.

Store the activated carbon filter in its package when not in use.

The life span of the filter depends on the working conditions. The mean life span is about 150 working hour

AIR CONDITIONING SYSTEM

To keep the air conditioning effective, please remember to clean the radiator on the roof and keep the gas on the compressor at level.

To clean the radiator use compressed air. Keep a maximum of 3.5 bar in order not to damage the radiator.

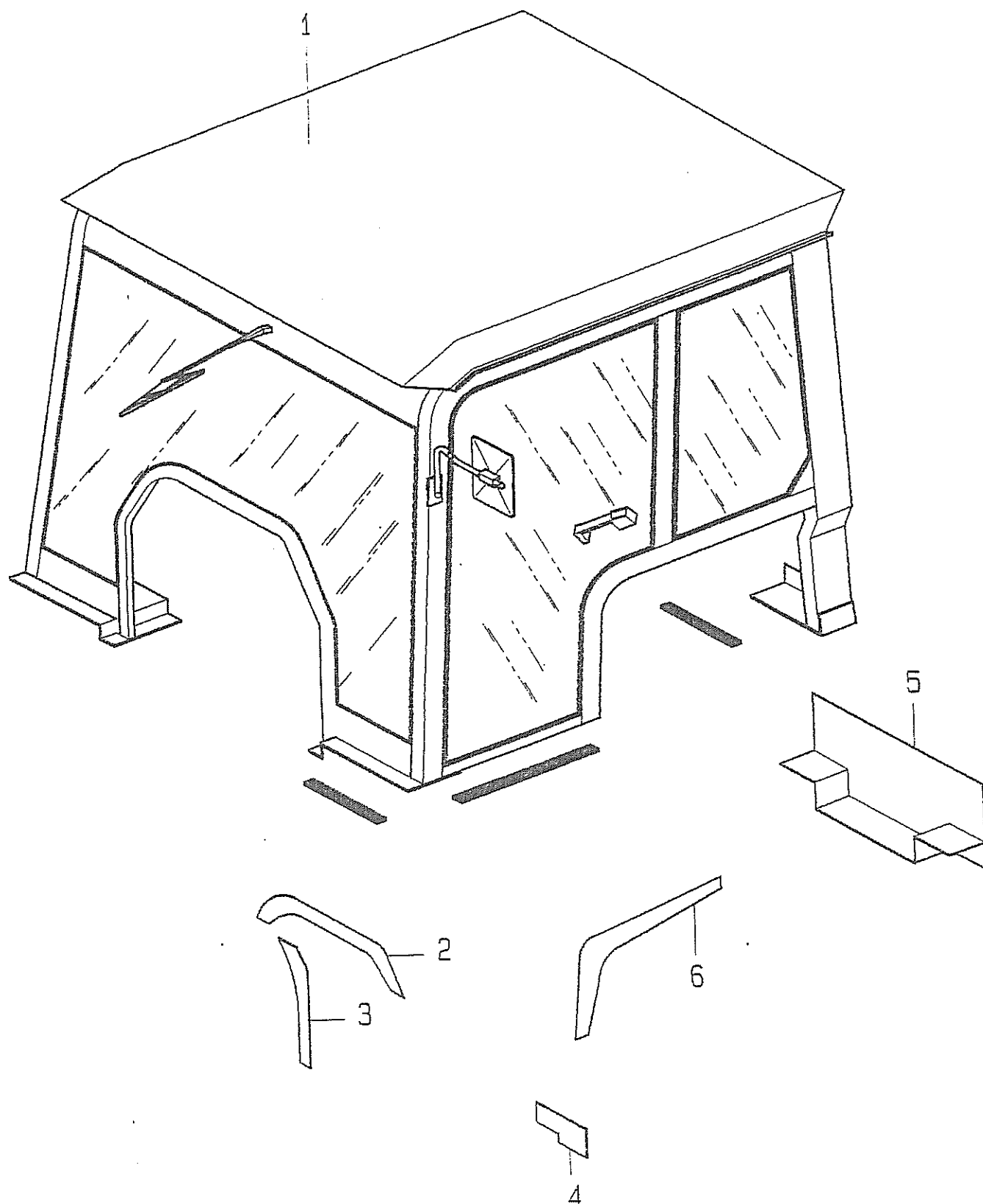
To refill the compressor, do not exceed 0.7 Kg. for big compressors and 0.5 for small compressors and do not put the system under excessive pressure.

For further instructions please refer to the instruction manual of the air conditioning system.

Please do not hesitate to contact us for any question!

AGRITAL S.r.l.

SCHEMA MONTAGGIO CABINA Vers.2001 SU
LANDINI TREKKER C70-C80-C90-C100



AGRITAL S.r.l.

Via Leonardo Da Vinci, 20

24040 Arzago d'Adda

(BERGAMO) - ITALY

TEL : 0363-87633

FAX : 0363-87355

E-Mail: agrit@agritalsovema.com

**AGRITAL**
S.R.L.

Capitale Sociale Lit.400.000.000

Reg. Trib. BG 11657

C.C.I.A.A. BG 162161

Partita IVA 00629080169

THE ASSEMBLY CABIN VERS. 2001 SU

LANDINI TREKKER C70/C80/C90C/100

REMOVE FROM TRACTOR: DRAIN, ROLL-BAR AND REAR BOXES.

- Glue the adhesive seal 30x15 under the cabin door to the compartment holding it to the outside. Paste the adhesive seal 25x5 in the front and rear cab mounting brackets (No. 2 bracket pieces on the outer edges). Then lift the cab "1" means using the hook and lower it on the tractor. Centering in an optimal and secure with screws M12x35, washers and lock nuts using the hardware of the original roll-bar (the front side of No. 5, n. 4 for the back side). Replace the top cases, and the exhaust pipe fixing it to the upright of the cabin.

- Closing Assembly. NB: all the closures are mounted inside the cab. Drill holes with diameter 4.2 point for self-tapping screws.

Push seal bulb on the dash locks "2" and "3", place them on the dashboard compartment of the car and fasten with screws and washers black plastic in order to have a perfect closure to the dashboard of the tractor.

Place the closures "4" under the dashboard so as to close the space between the dashboard and footrest (route the heating pipes and those of any air conditioning).

Push seal bulb side edges of the rear end "5", insert the locking between the cases and fixed to the transom of the cab and sheet metal screws and washers under seat with black plastic.

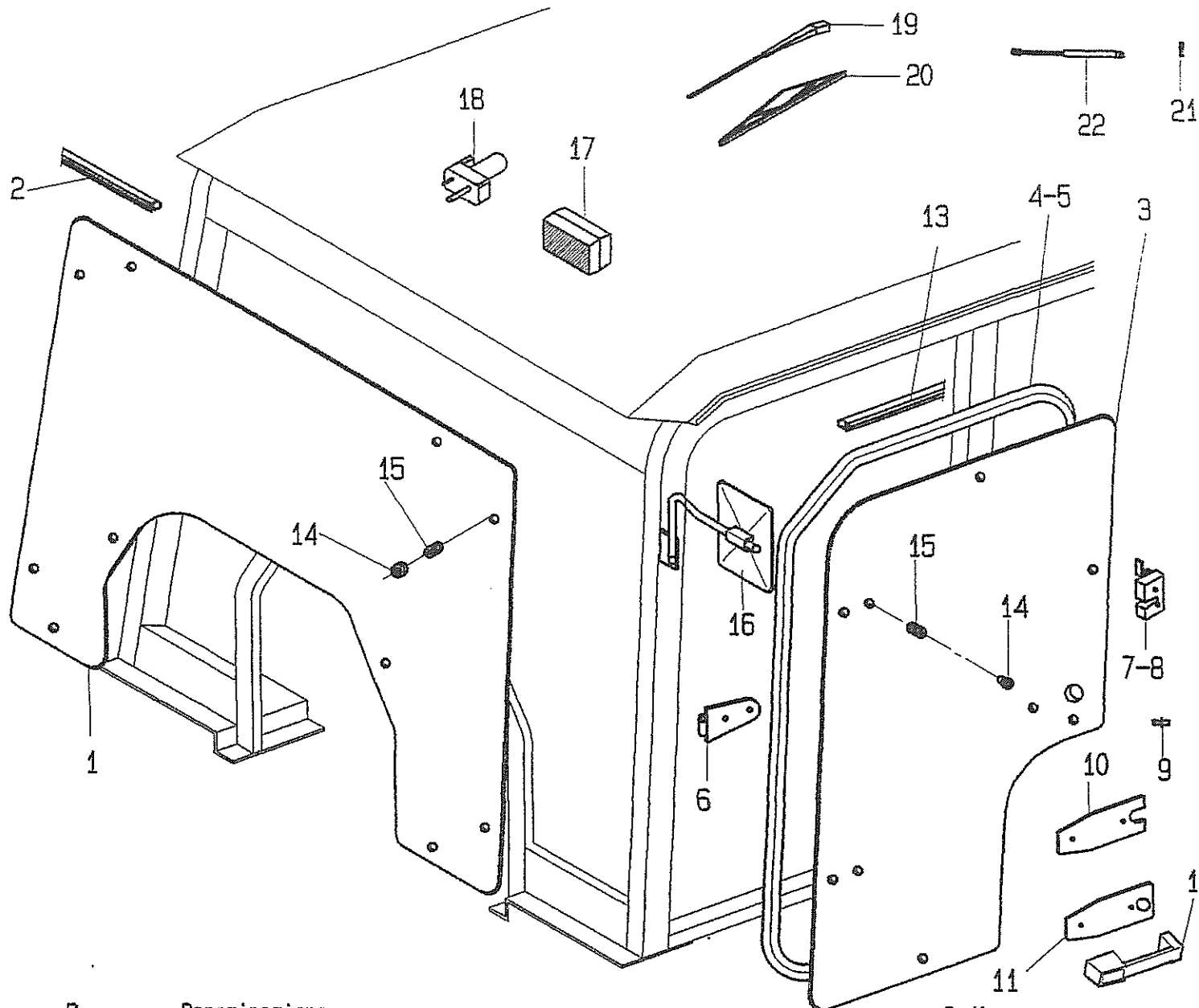
Push seal on the bulb side locks "6", set in order to have perfect closure between car and trunks, and secure with self tapping black plastic washers.

- Mount the rear work light on the rear bulkhead "5".

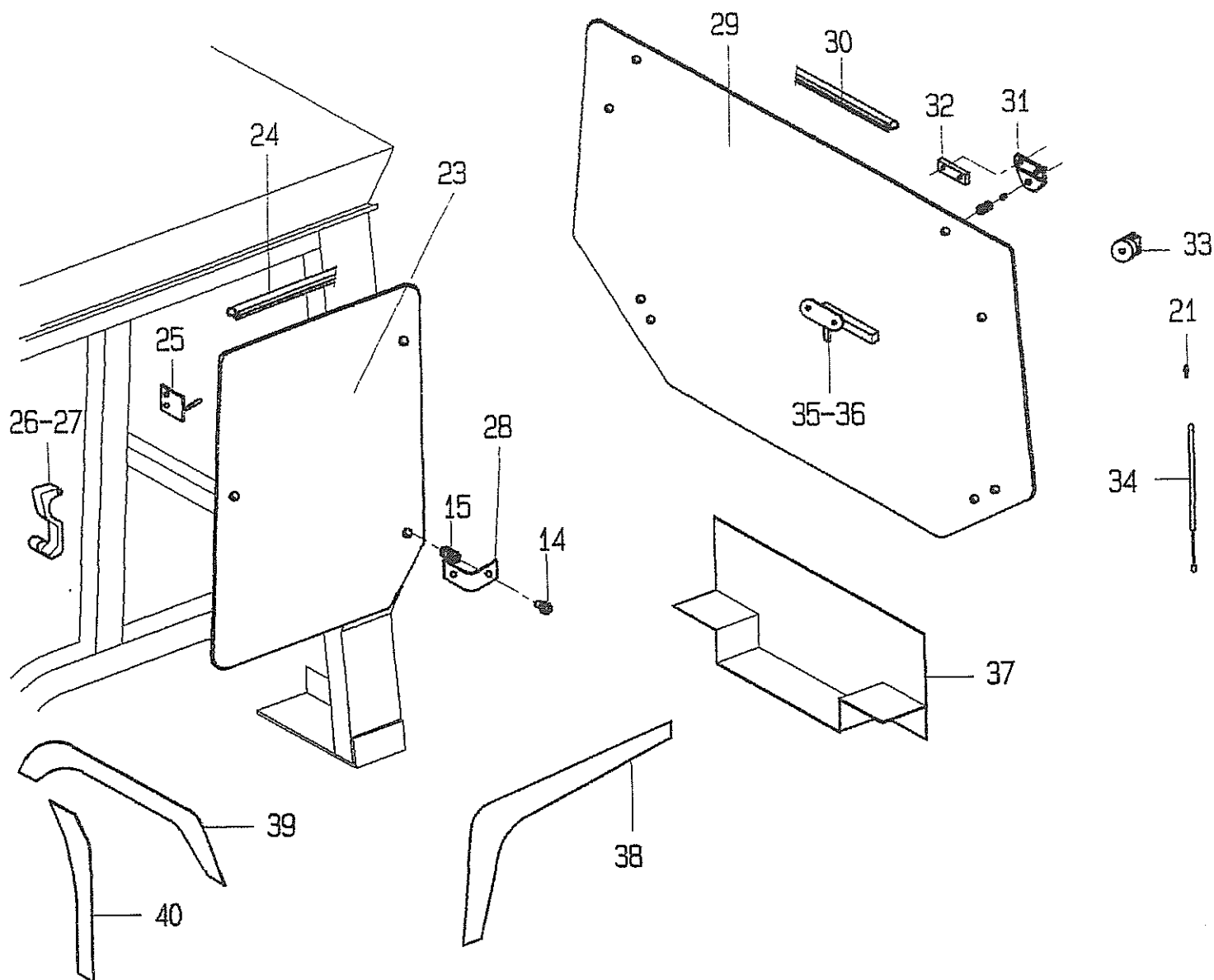
- Connect the wiring to the starter.

- Connect the pipes to the heat pump of the engine cooling. Use hoses and metal clamps supplied. The pipe is sealed with adhesive tape.

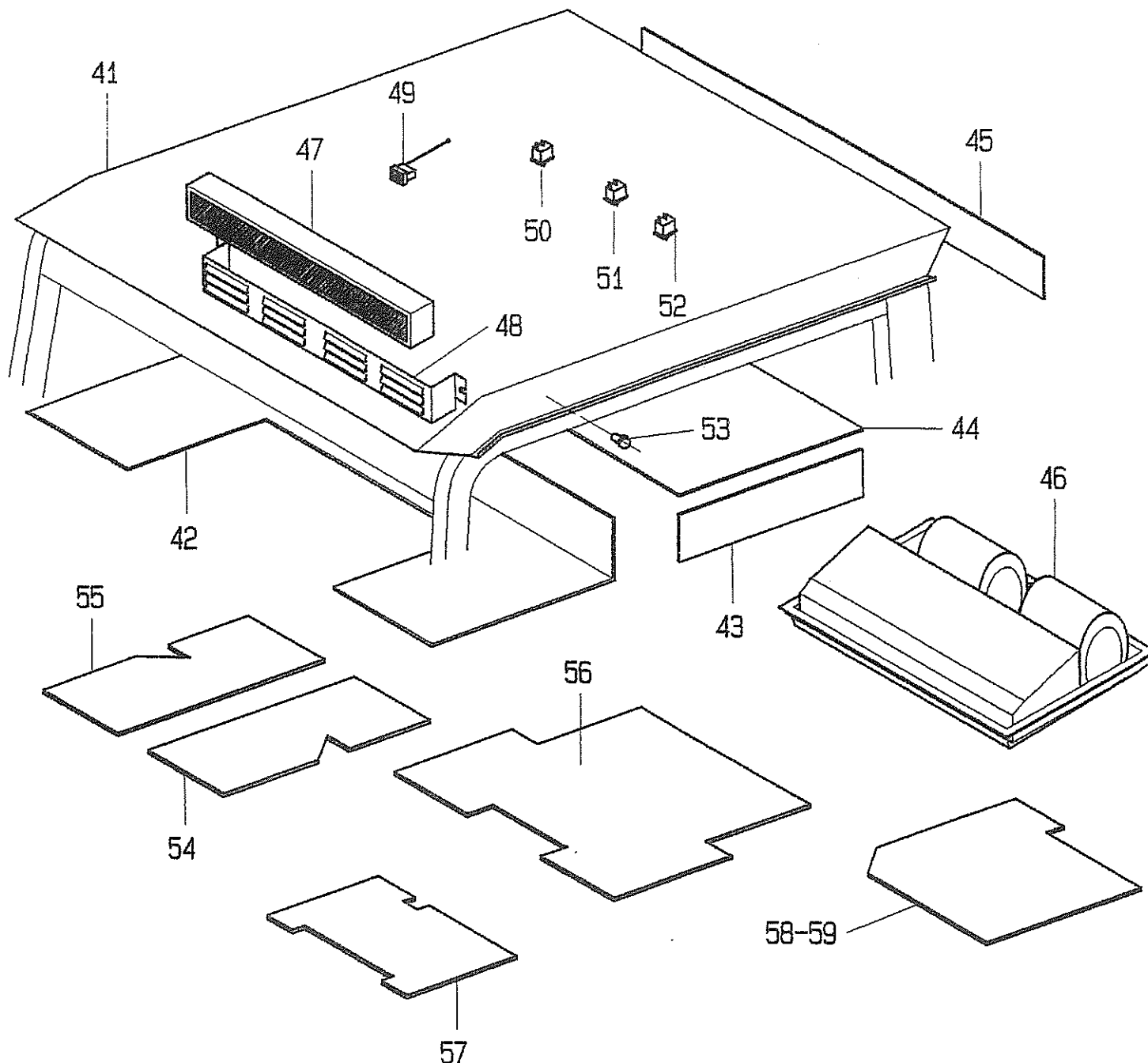
Fix the pipes with plastic ties supplied along the path so that it can't touch any hot too



P.	Denominazione	Codice
1	CRISTALLO FRONTALE	333.2010.0
2	GUARNIZIONE CRISTALLO FRONTALE	210060
3	CRISTALLO PORTA	333.2030.0
4	TELAIO PORTA SX	333.1068.5
4a	PORTA SX COMPLETA	333.1031.6
5	TELAIO PORTA DX	333.1069.5
5a	PORTA DX COMPLETA	333.1030.6
6	CERNIERA PORTA	740.1052.5
7	SERRATURA PORTA SX	2.9029061.4
8	SERRATURA PORTA DX	2.9029062.4
9	RISCONTRO SERRATURA	2.9519006.0
10	PIASTRA INTERNA PORTA	333.1067.5
11	PIASTRA ESTERNA PORTA	333.1066.5
12	MANIGLIA PORTA	2.9029054.4
13	GUARNIZIONE CRISTALLO PORTA	210060
14	SUPPORTO SILENT-BLOK	2.9119007.0
15	GOMMINO PER CRISTALLO	2.6569001.0
16	SPECCHIO RETROVISORE SX	2.9319018.4
16a	SPECCHIO RETROVISORE DX	2.9319020.4
17	FARO LAVORO	2.8219020.4
18	MOTORINO TERGICRISTALLO	2.9219053.4
19	ASTA TERGICRISTALLO	2.9219054.0
20	SPAZZOLA TERGICRISTALLO	2.9219007.0
21	SNODO SFERICO PER AMMORTIZZATORE	2.9719001.2
22	AMMORTIZZATORE PORTA	2.9619019.0



P.	Denominazione	Codice
23	CRISTALLO FINESTRINO	333.2020.0
24	GUARNIZIONE CRISTALLO FINESTRINO	210060
25	RISCONTRO MANIGLIA FINESTRINO	101.1060.2
26	MANIGLIA FINESTRINO SX	2.9419002.4
27	MANIGLIA FINESTRINO DX	2.9419003.4
28	CERNIERA FINESTRINO	2.9919027.0
29	CRISTALLO POSTERIORE	333.2040.0
30	GUARNIZIONE CRISTALLO POSTERIORE	210060
31	CERNIERA CRISTALLO POSTERIORE	2.9919009.4
32	DISTANZIALE CERNIERA	423.1057.0
33	SUPPORTO	2.9419001.0
34	AMMORTIZZATORE POSTERIORE	2.9619018.0
35	MANIGLIA SX CRIST.POSTERIORE	2.9029011.4
36	MANIGLIA DX CRIST.POSTERIORE	2.9029014.4
37	CHIUSURA POSTERIORE	333.1084.5
38	CHIUSURA LATERALE	333.1076.5
39	CHIUSURA CRUSCOTTO	333.1074.5
40	CHIUSURA LATERALE CRUSCOTTO	333.1098.5



P.	Denominazione	Codice
41	TETTO	333.1050.5
41a	TETTO PER A.CONDIZIONATA	333.6550.5
42	SOTTOTETTO ANTERIORE	333.4051.0
42a	SOTTOTETTO ANTERIORE PER A.CONDIZIONATA	333.6553.0
43	SOTTOTETTO LATERALE	333.4053.0
44	SOTTOTETTO CENTRALE	333.4052.0
45	SOTTOTETTO POSTERIORE	333.4054.0
46	GRUPPO RISCALDAMENTO	146.6040.4
47	FILTRO ARIA	2.8119007.0
48	PORTAFILTRO	2.8119007.0
49	BLOCCETTO COLLEG.ELETTRICO	605.8053.2
50	INTERRUTTORE TERGICRISTALLO (Solo per riscaldamento)	2.8119007.0
51	INTERRUTTORE FARI LAVORO (Solo per riscaldamento)	2.8119008.0
52	INTERRUTTORE VENTOLE (Solo per riscaldamento)	2.8119006.0
53	PRESA GIROFARO	2.8219013.0
54	TAPPETO SX	333.4044.0
55	TAPPETO DX	333.4043.0
56	RIVESTIMENTO SOTTOSEDILE	333.4057.0
57	RIVESTIMENTO CENTRALE	333.4058.0
58	RIVESTIMENTO PARAFANGO SX	333.4055.0
59	RIVESTIMENTO PARAFANGO DX	333.4056.0

KIT COVER cod. AG 333 - OPTIONAL

Remove from the machine-roll bars, side box, dashboard top and bottom, tank and seat.

OPERATIONS MUST BE CARRIED OUT BEFORE YOU INSTALL THE CAB.

Place the plate provided between the sheet division compartment and support the machine controls and secure with screws.

In order to facilitate the passage of tubes heating / air conditioning, drill the plate in the engine compartment as image lime. (insert the cable to the pipe).

Glue the black plastic topping on the platforms near the brake and clutch pedals then closing with the brush provided (cut to size 2 for brake and one for clutch pedal) the space remaining. Close brushes with the space of the lever left side seat.

Cover with a piece of topping (cut to size) the rectangular room and the underseat compartment divider lever (enter from under the sheet underside) and the space of the delivery pipe of the distributor.

Silicone all the gaps between fenders and platform.

Replace the tank and close with 40x20 gasket between the tank and the engine compartment sheet. With the coating the bottom side of the tank on both sides.

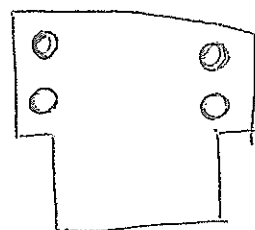
Replace the instrument panel upper and lower closing the gaps with the coating before mounting the gear levers headphones.

Fit the covers transmission tunnel, underside and fenders (parts already cut to shape).

AFTER MOUNTING THE CAR AND I REMOUNTED BOXES SIDE

close the gaps between the pillars of the cabin trunks and pieces of coating and silicone. Silicone and other cracks that can give access to dust and / or dirt.

Image:



DRILL STEEL for
TUBES
(HEATING or/and A.C.)

AGRITAL s.r.l.
Via Leonardo Da Vinci, 20
Arzago d'Adda (BG)

-ITALIA-

tel. 0363.87633
fax. 0363.87355

www.agritale.com
e-mail : agritale@agritale.com